

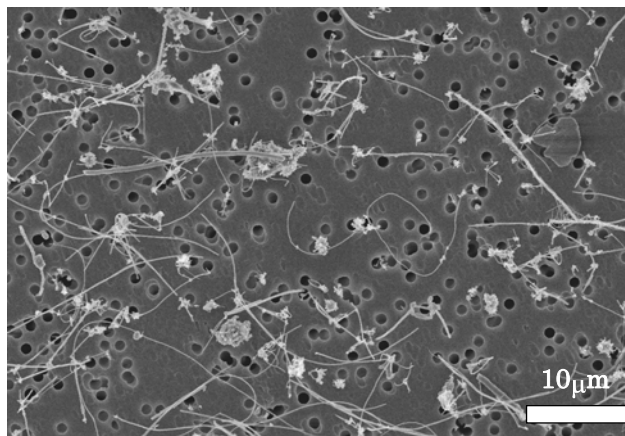
複層カーボンナノチューブ (MWCNT) のラットを用いた
吸入による13週間毒性試験報告書

試験番号：0780

PHOTOGRAPHS

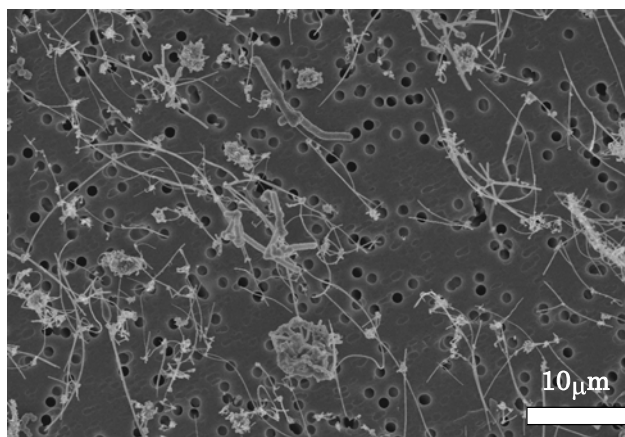
PHOTOGRAPHS

- PHOTOGRAPHS 1 SEM IMAGE OF MWCNT COLLECTED FROM EXPOSURE
CHAMBER: 0.2 mg/m³
- PHOTOGRAPHS 2 SEM IMAGE OF MWCNT COLLECTED FROM EXPOSURE
CHAMBER: 1 mg/m³
- PHOTOGRAPHS 3 SEM IMAGE OF MWCNT COLLECTED FROM EXPOSURE
CHAMBER: 5 mg/m³
- PHOTOGRAPHS 4 HISTOPATHOLOGICAL FINDINGS (1 mg/m³)
: MALE (H & E STAIN)
- PHOTOGRAPHS 5 HISTOPATHOLOGICAL FINDINGS (5 mg/m³)
: MALE (H & E STAIN)
- PHOTOGRAPHS 6 HISTOPATHOLOGICAL FINDINGS (CONTROL)
: MALE (MASSON TRICHROME STAIN)
- PHOTOGRAPHS 7 HISTOPATHOLOGICAL FINDINGS (5 mg/m³)
: MALE (MASSON TRICHROME STAIN)



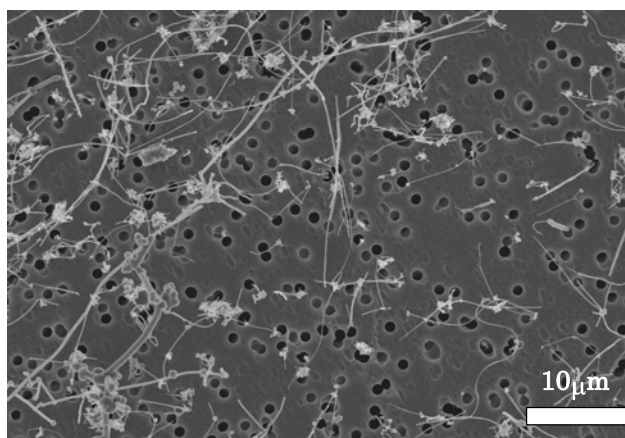
PHOTOGRAPH 1-1

SEM image of MWCNT collected from exposure chamber
(0.2 mg/m³, 1st week)



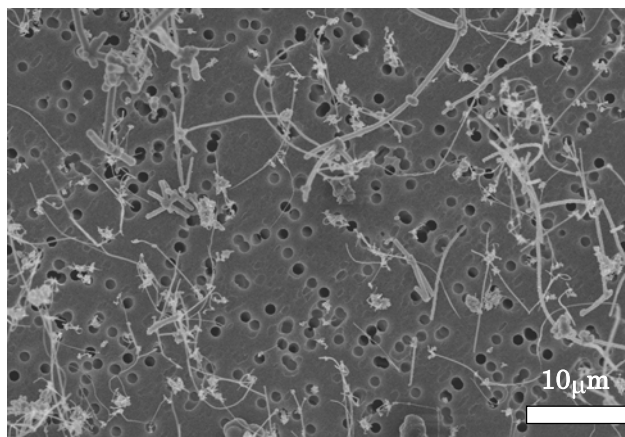
PHOTOGRAPH 1-2

SEM image of MWCNT collected from exposure chamber
(0.2 mg/m³, 6th week)



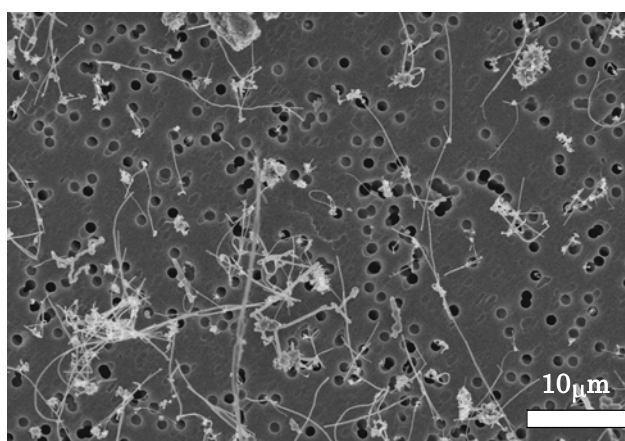
PHOTOGRAPH 1-3

SEM image of MWCNT collected from exposure chamber
(0.2 mg/m³, 13th week)



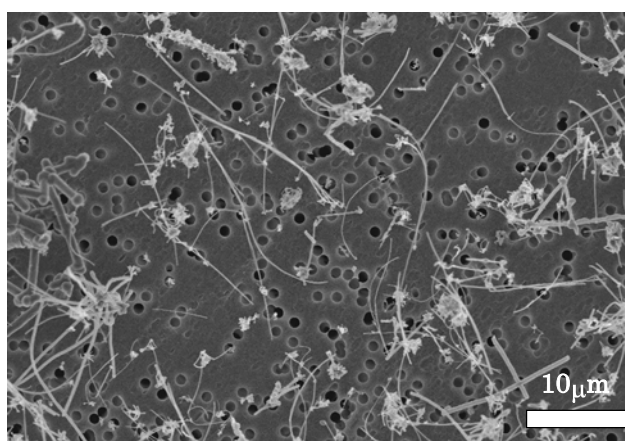
PHOTOGRAPH 2-1

SEM image of MWCNT collected from exposure chamber
(1 mg/m³, 1st week)



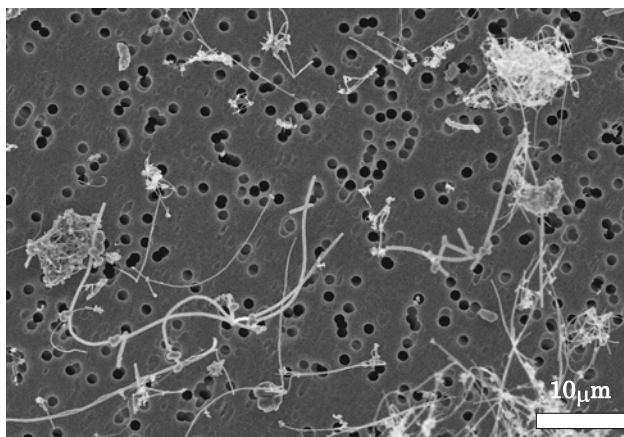
PHOTOGRAPH 2-2

SEM image of MWCNT collected from exposure chamber
(1 mg/m³, 6th week)



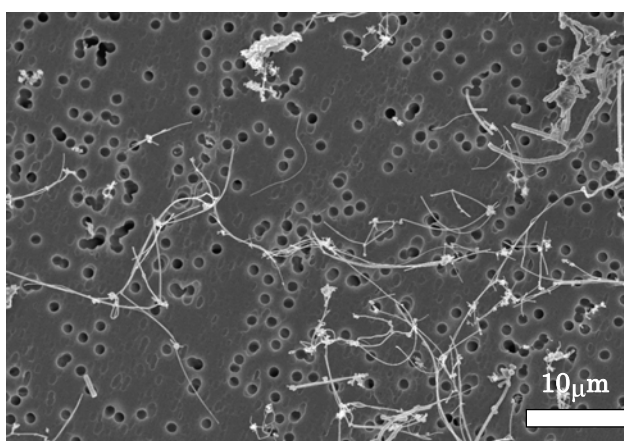
PHOTOGRAPH 2-3

SEM image of MWCNT collected from exposure chamber
(1 mg/m³, 13th week)



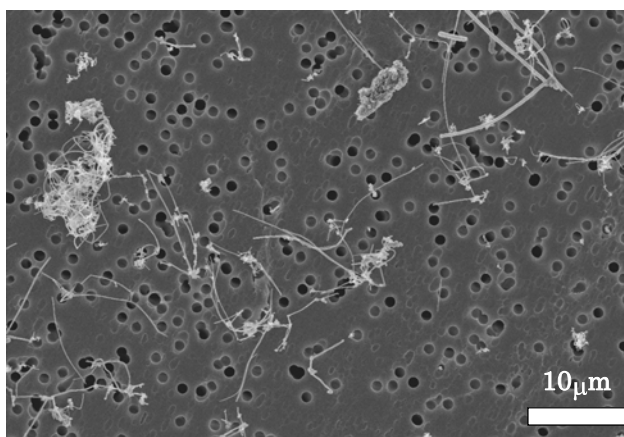
PHOTOGRAPH 3-1

SEM image of MWCNT collected from exposure chamber
(5mg/m³, 1st week)



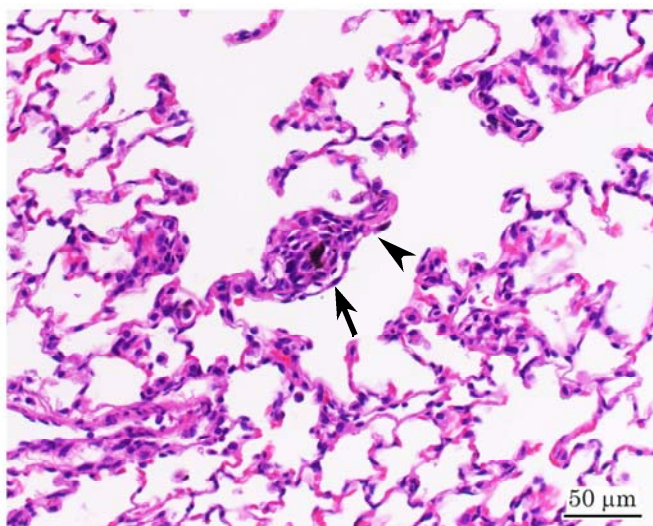
PHOTOGRAPH 3-2

SEM image of MWCNT collected from exposure chamber
(5 mg/m³, 6th week)



PHOTOGRAPH 3-3

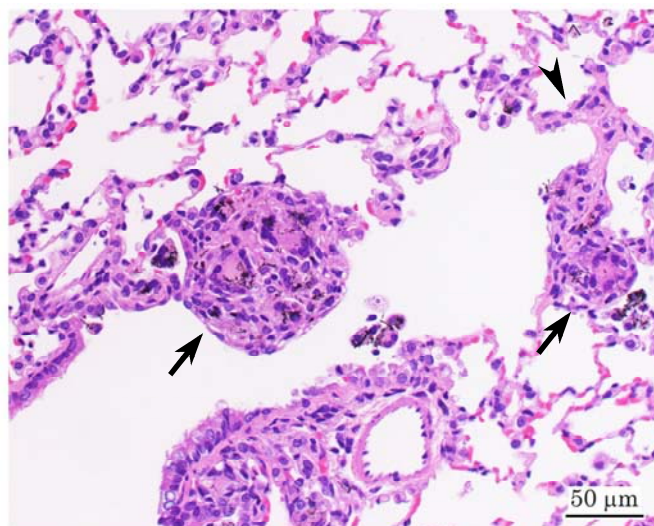
SEM image of MWCNT collected from exposure chamber
(5 mg/m³, 13th week)



PHOTOGRAPH 4

Lung : Granulomatous change (arrow) and thickening of alveolar wall, focal (arrowhead).

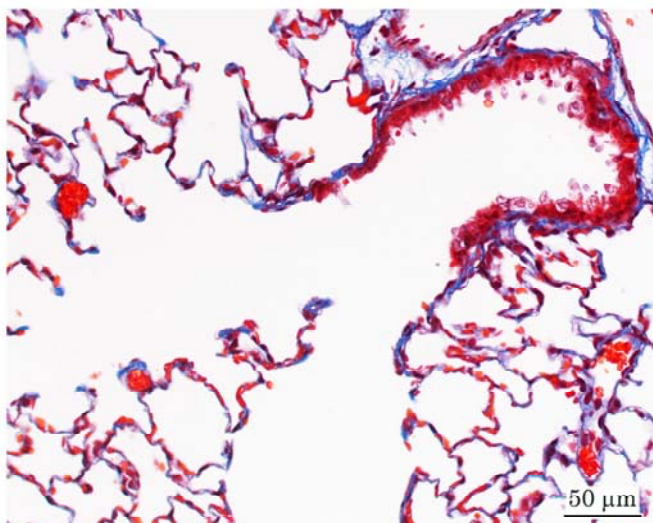
Rat, Male, 1 mg/m³, Animal No. 0780-1207 (H&E)



PHOTOGRAPH 5

Lung : Granulomatous change (arrows) and thickening of alveolar wall, focal (arrowhead).

Rat, Male, 5 mg/m³, Animal No. 0780-1302 (H&E)

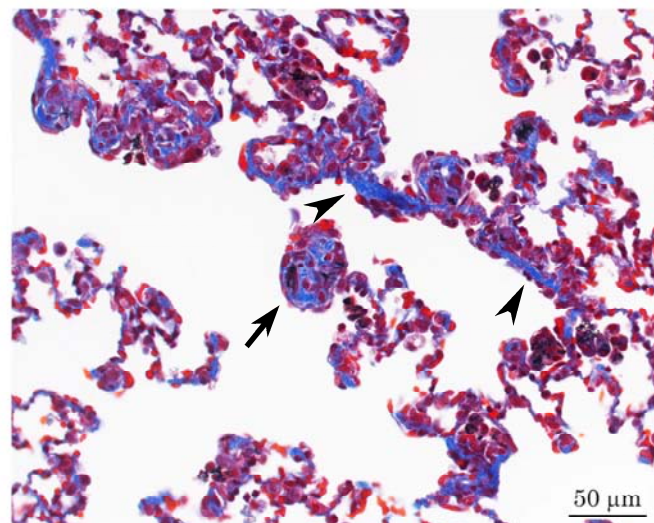


PHOTOGRAPH 6

Lung (Normal): Collagen fibers are stained blue.

Rat, Male, Control, Animal No. 0780-1005

(Masson trichrome stain)



PHOTOGRAPH 7

Lung : Granulomatous change (arrow) and thickening of alveolar wall, focal (arrowheads). Collagen fibers are stained blue

Rat, Male, 5 mg/m³, Animal No. 0780-1302

(Masson trichrome stain)