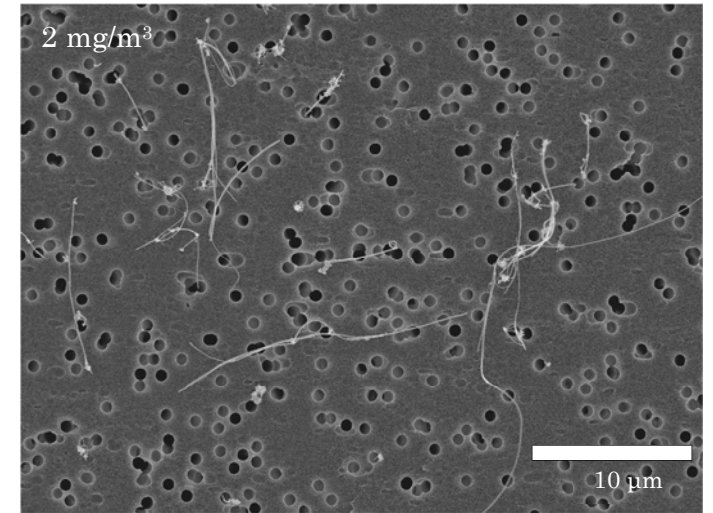
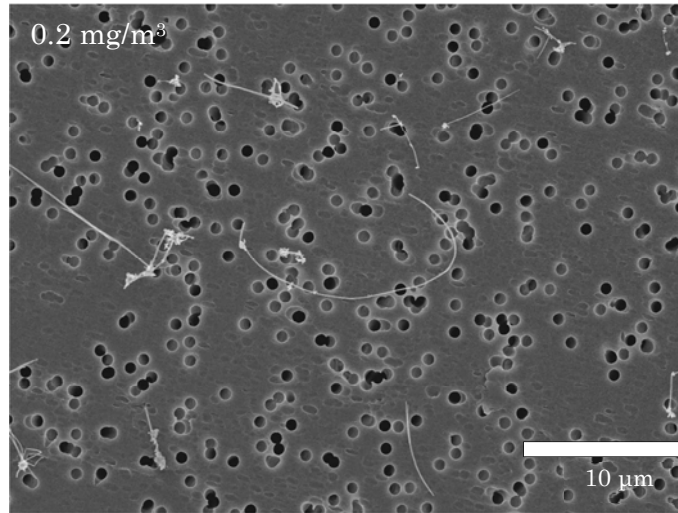
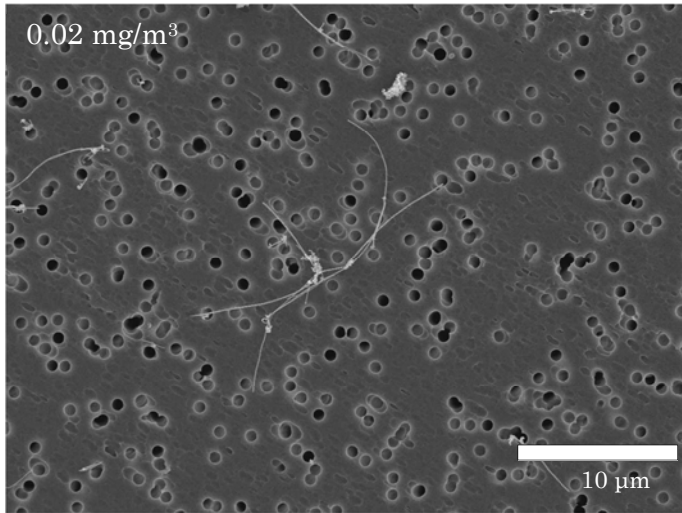


複層カーボンナノチューブ（MWCNT）の
ラットを用いた吸入によるがん原性試験報告書

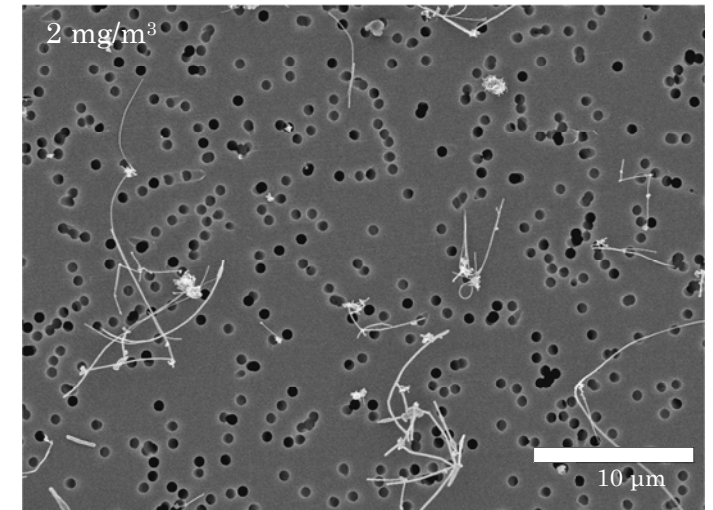
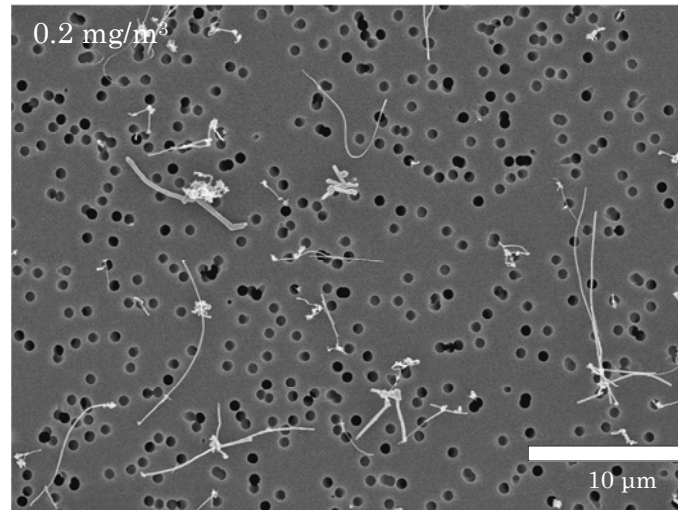
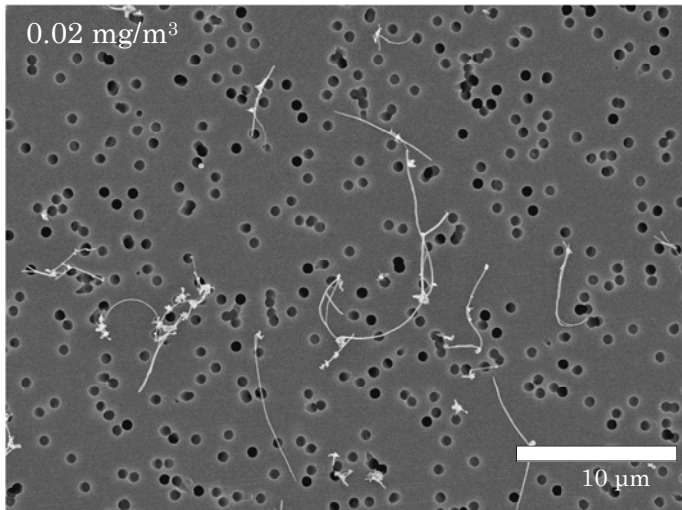
試験番号：0800

PHOTOGRAPHS

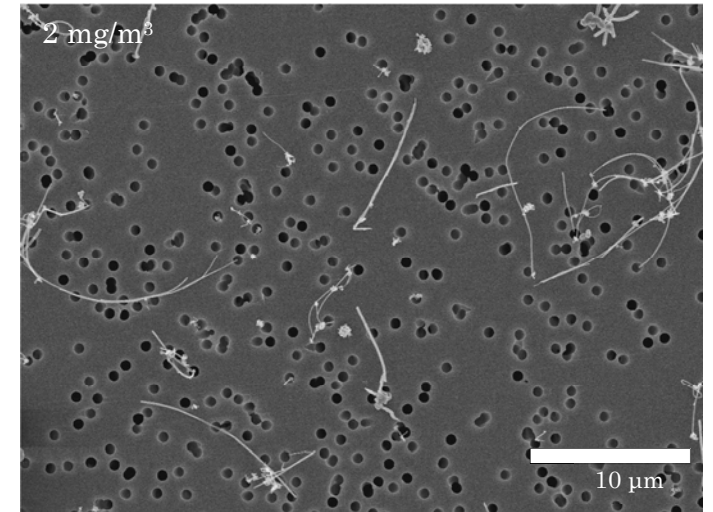
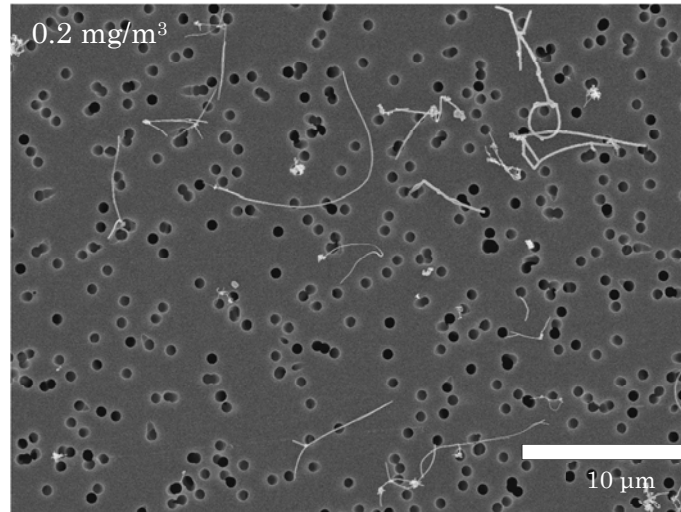
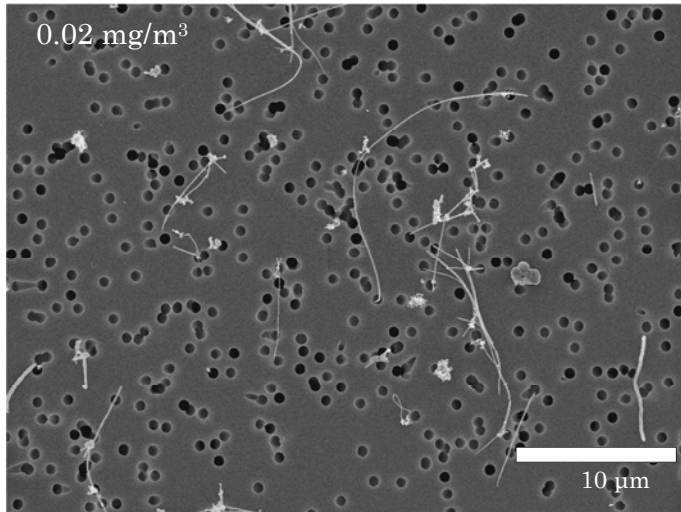
PHOTOGRAPH 1 SEM IMAGE OF MWCNT COLLECTED FROM EXPOSURE CHAMBER :
ADIMISTRATION 1 WEEK



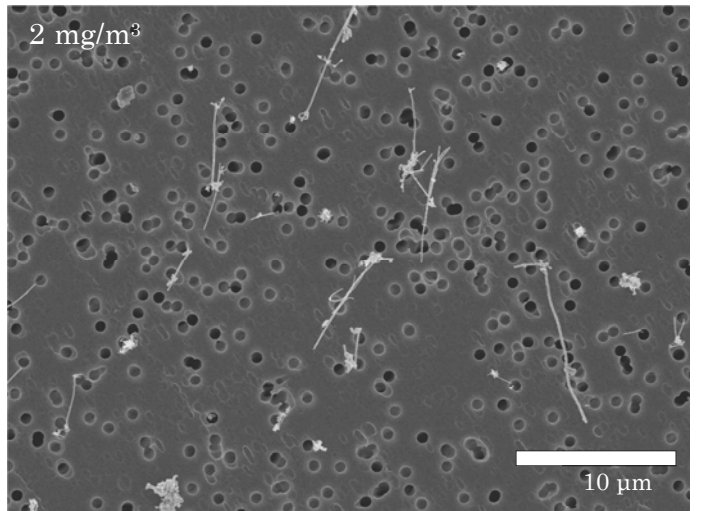
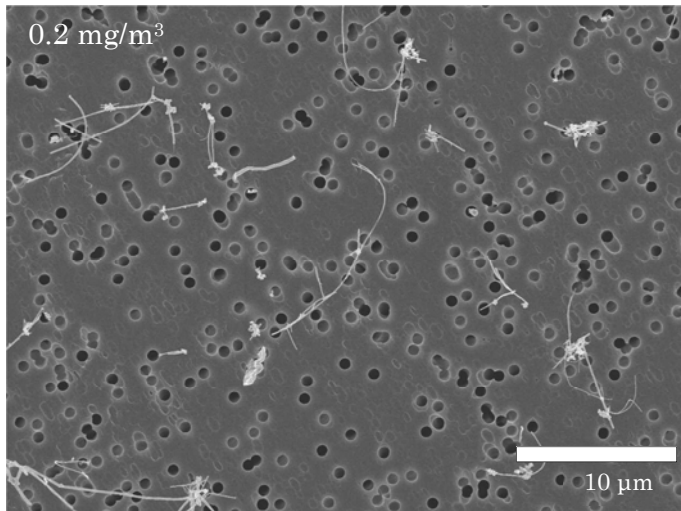
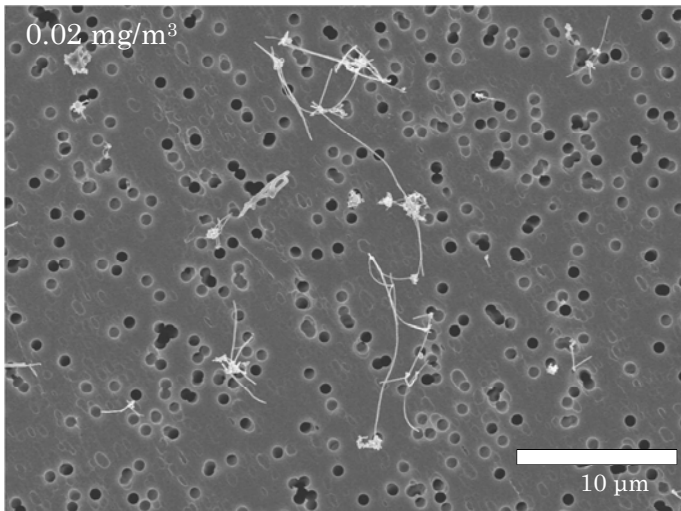
PHOTOGRAPH 2 SEM IMAGE OF MWCNT COLLECTED FROM EXPOSURE CHAMBER :
ADIMISTRATION 14 WEEKS



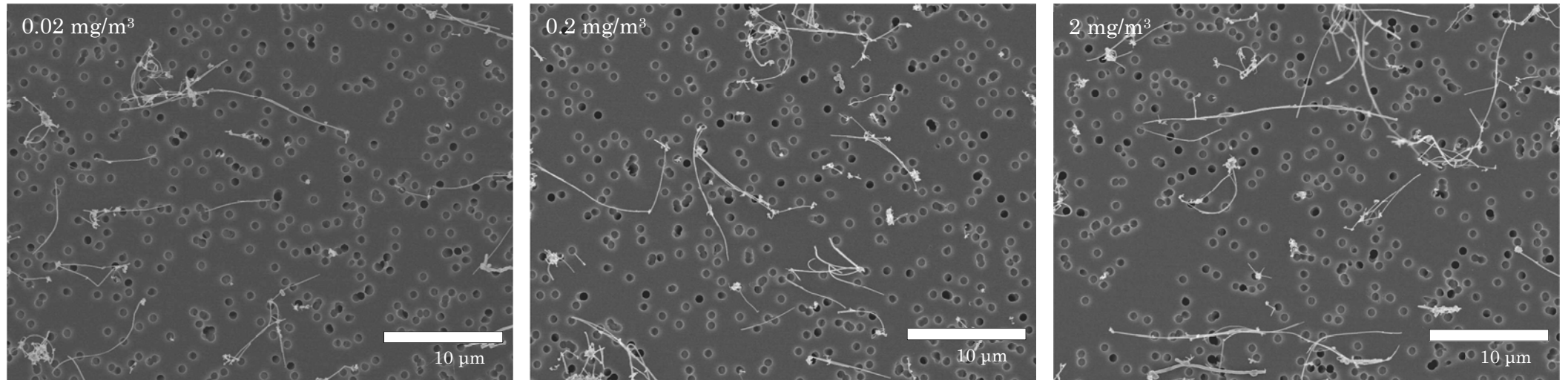
PHOTOGRAPH 3 SEM IMAGE OF MWCNT COLLECTED FROM EXPOSURE CHAMBER :
ADIMISTRATION 27 WEEKS



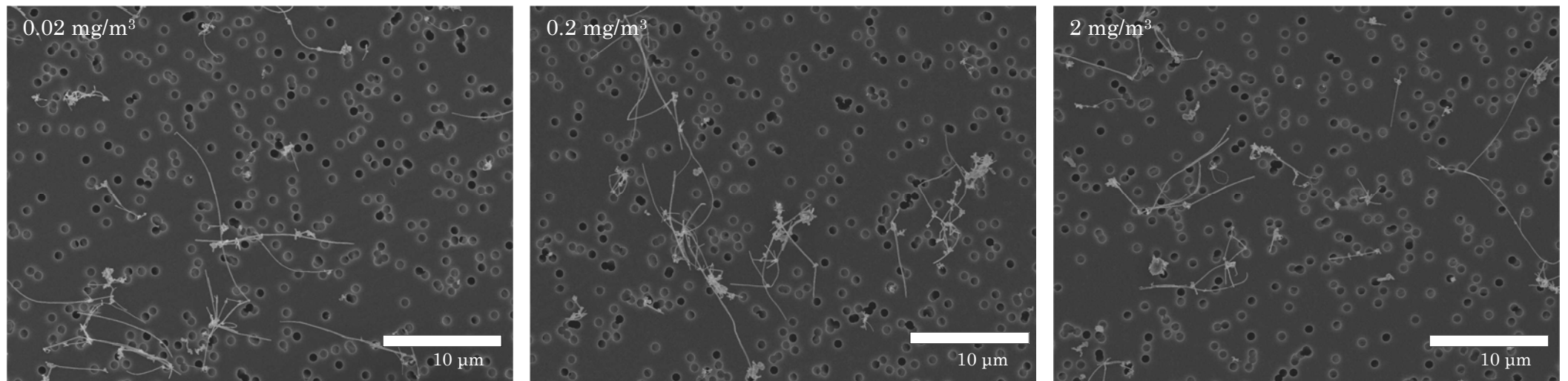
PHOTOGRAPH 4 SEM IMAGE OF MWCNT COLLECTED FROM EXPOSURE CHAMBER :
ADIMISTRATION 40 WEEKS



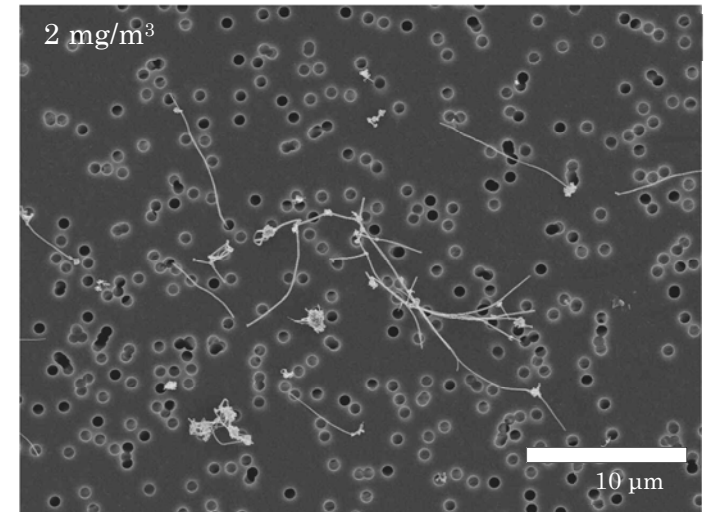
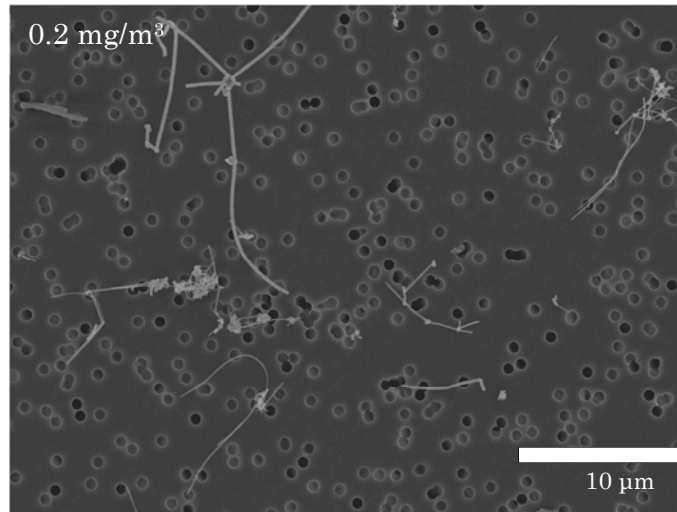
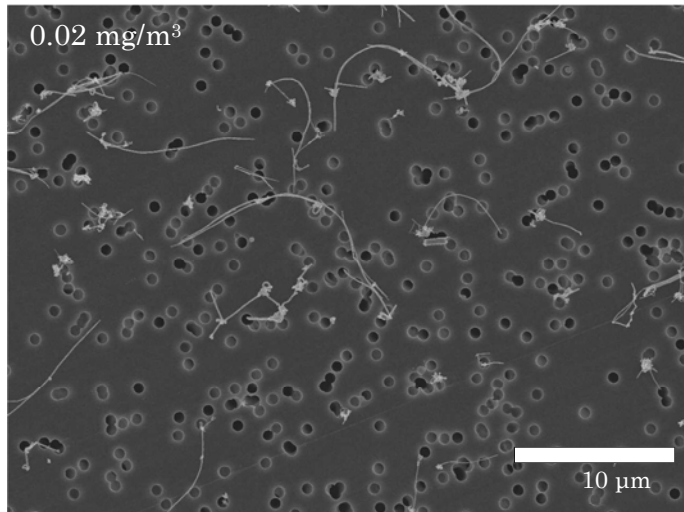
PHOTOGRAPH 5 **SEM IMAGE OF MWCNT COLLECTED FROM EXPOSURE CHAMBER :**
ADIMISTRATION 53 WEEKS



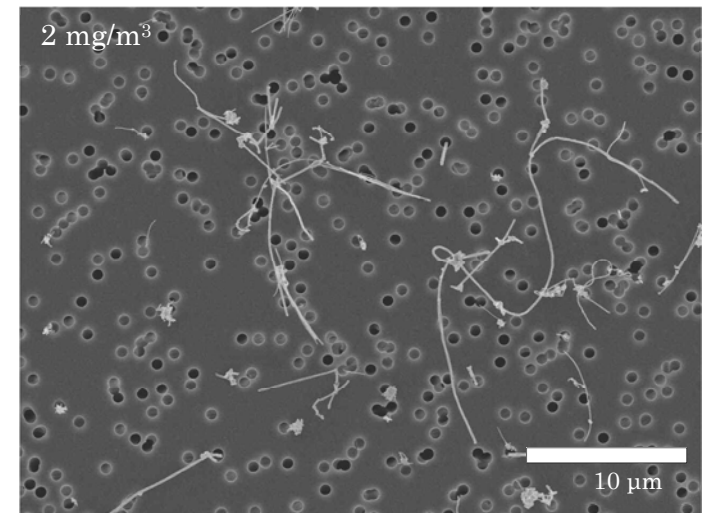
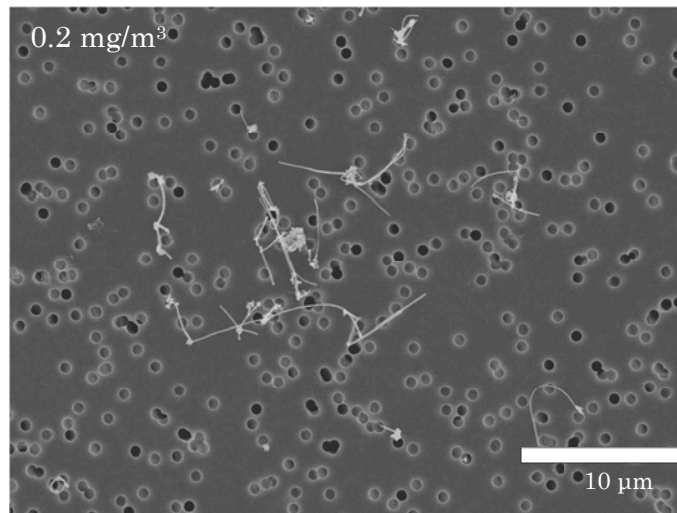
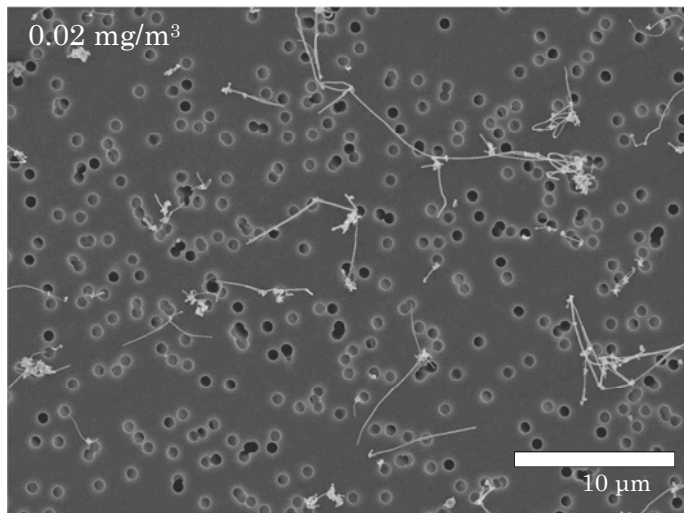
PHOTOGRAPH 6 **SEM IMAGE OF MWCNT COLLECTED FROM EXPOSURE CHAMBER :**
ADIMISTRATION 66 WEEKS



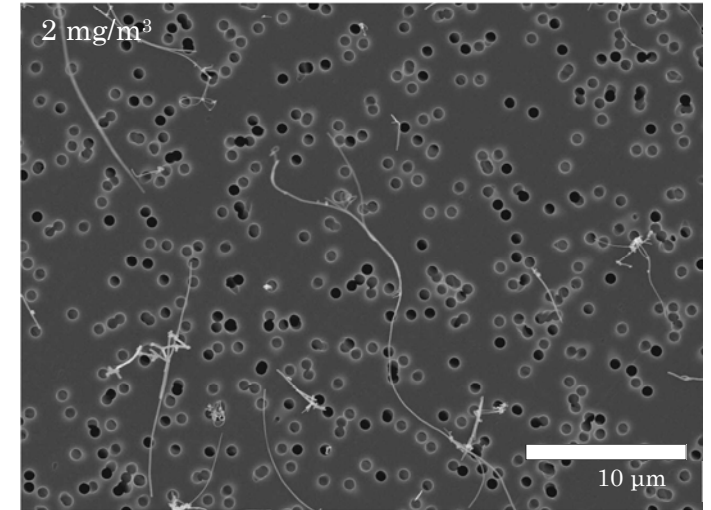
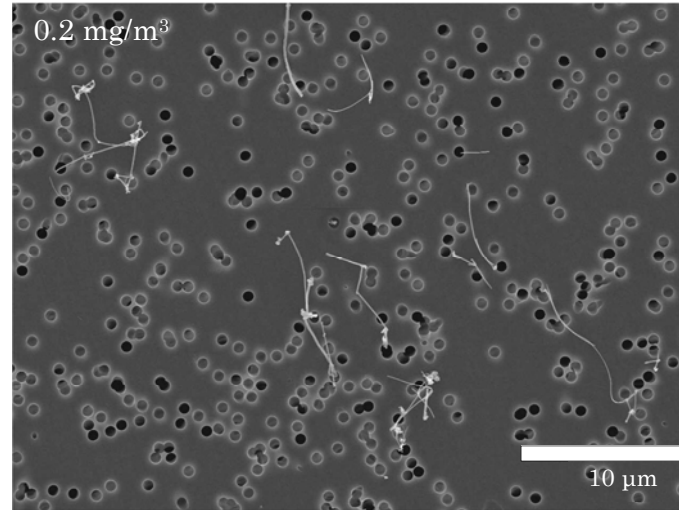
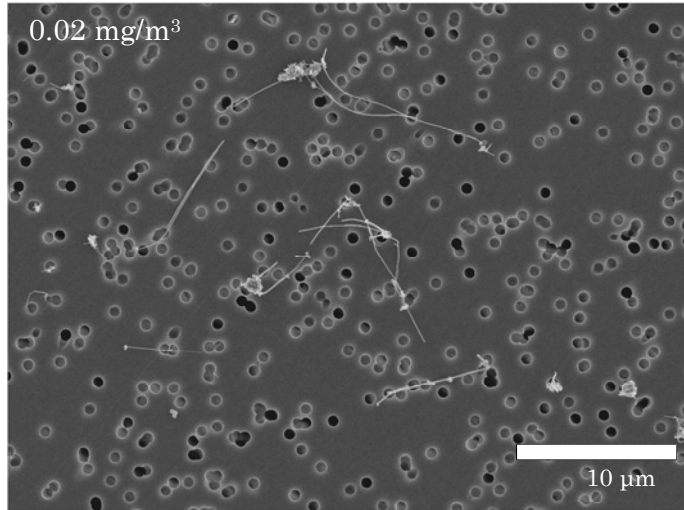
**PHOTOGRAPH 7 SEM IMAGE OF MWCNT COLLECTED FROM EXPOSURE CHAMBER :
ADIMISTRATION 79 WEEKS**

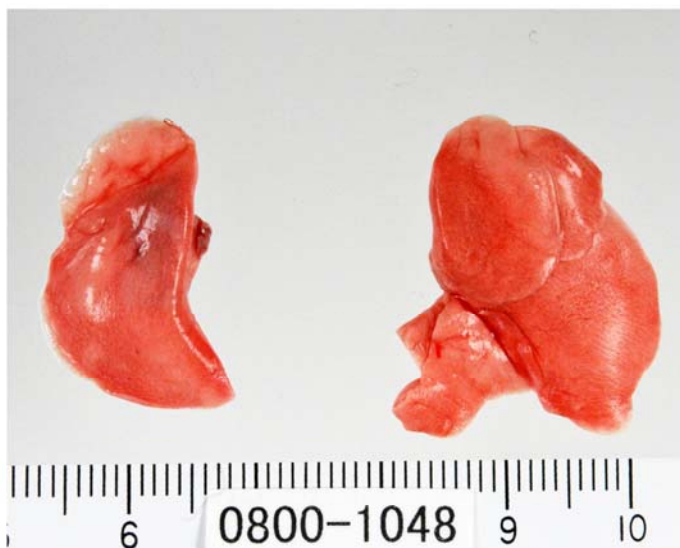


**PHOTOGRAPH 8 SEM IMAGE OF MWCNT COLLECTED FROM EXPOSURE CHAMBER :
ADIMISTRATION 92 WEEKS**



PHOTOGRAPH 9 SEM IMAGE OF MWCNT COLLECTED FROM EXPOSURE CHAMBER :
ADIMISTRATION 102 WEEKS

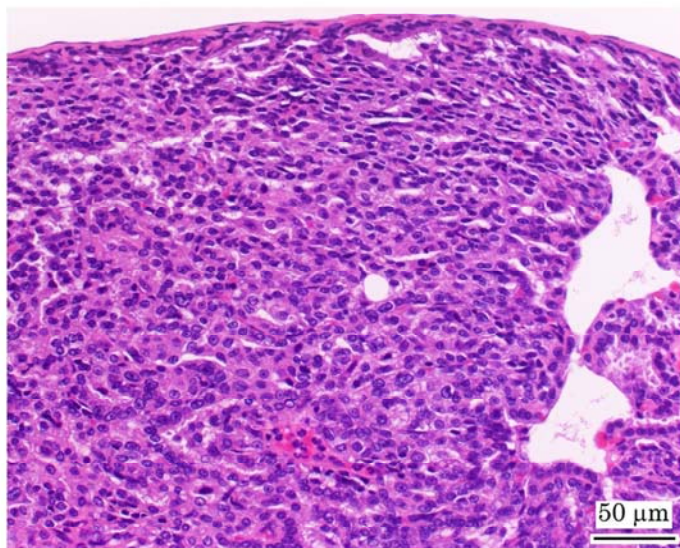




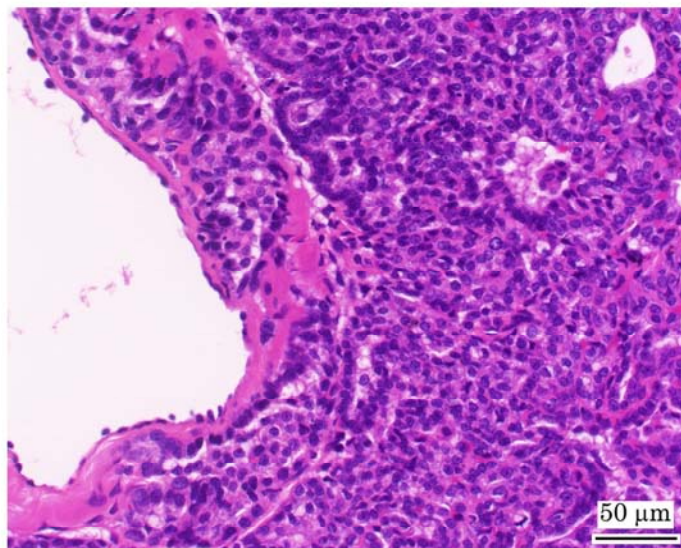
Photograph 10
Lung: Normal
Rat, Male, Control, Animal No. 0800-1048



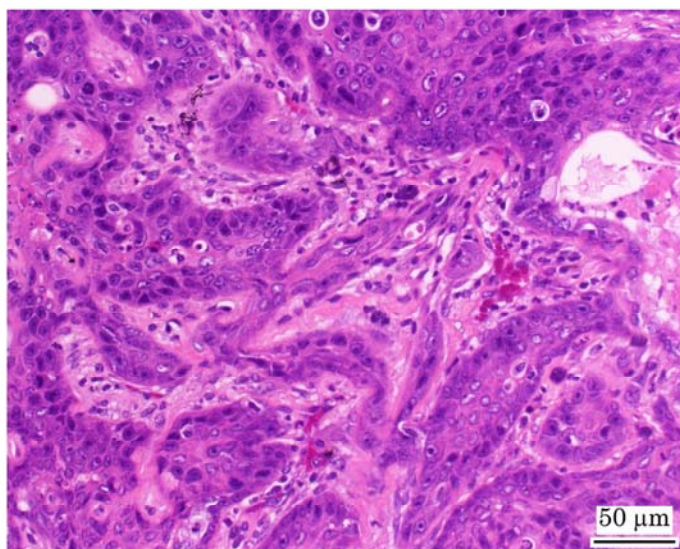
Photograph 11
Lung: Nodule, white patch, and black patch
Rat, Male, 2 mg/m³, Animal No. 0800-1316



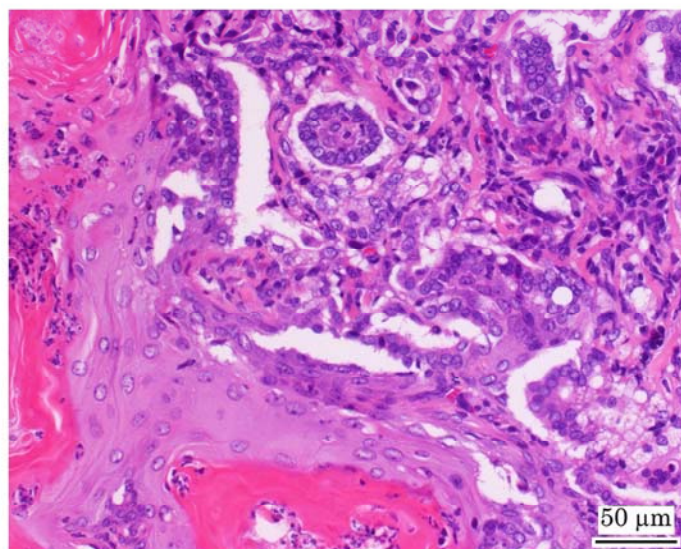
Photograph 12
Lung: Bronchiolar-alveolar adenoma
Rat, Male, 0.2 mg/m³, Animal No. 0800-1220 (H&E)



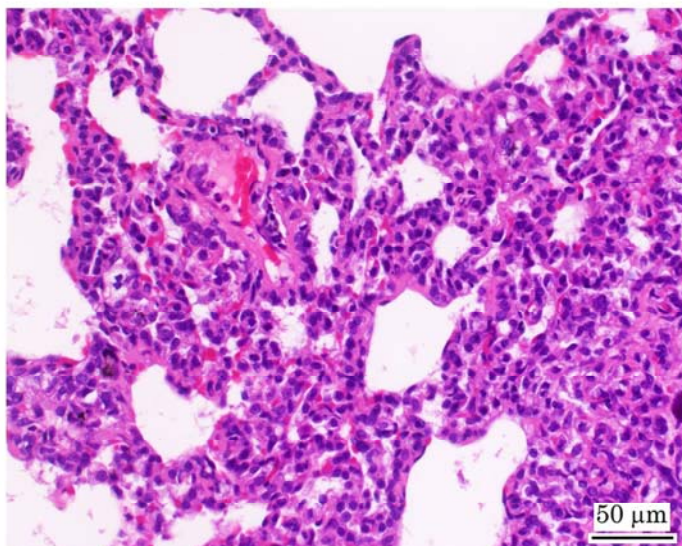
Photograph 13
Lung: Bronchiolar-alveolar carcinoma
Rat, Male, 0.2 mg/m³, Animal No. 0800-1250 (H&E)



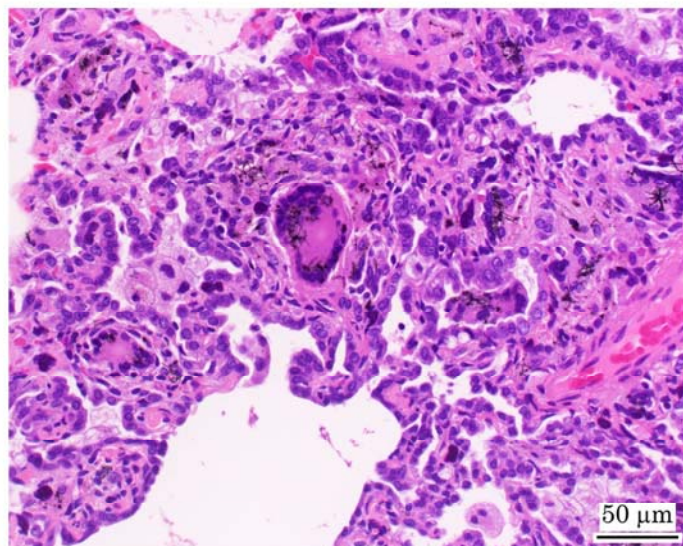
Photograph 14
Lung: Squamous cell carcinoma
Rat, Female, 2 mg/m³, Animal No. 0800-2335 (H&E)



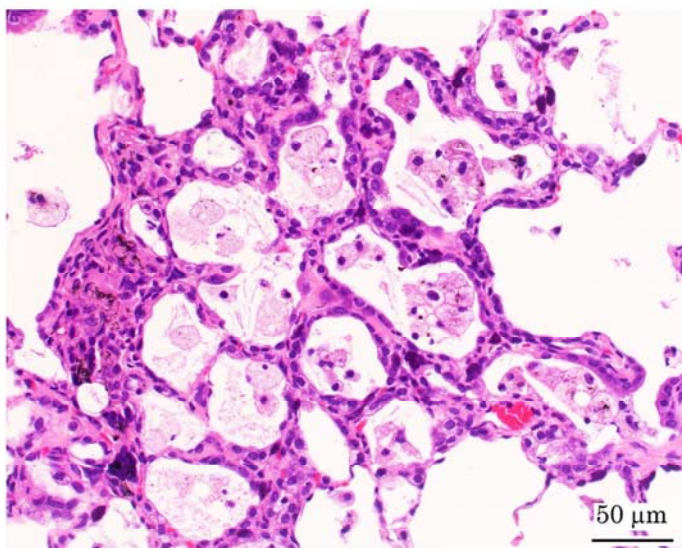
Photograph 15
Lung: Adenosquamous carcinoma
Rat, Male, 2 mg/m³, Animal No. 0800-1320 (H&E)



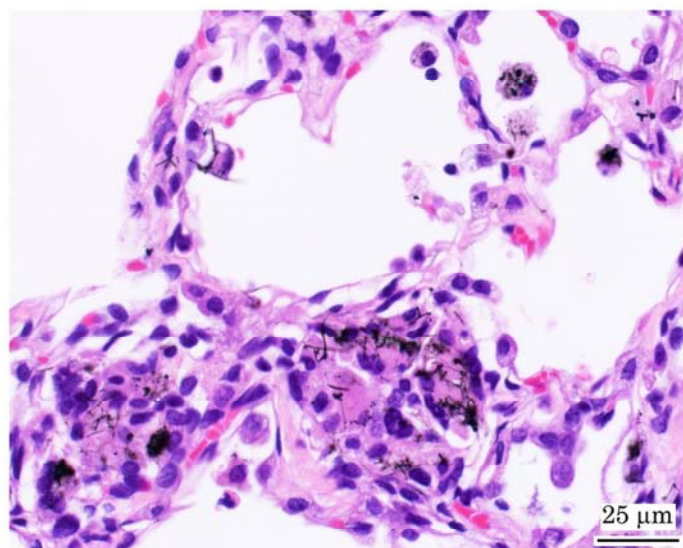
Photograph 16
Lung: Bronchiolar-alveolar cell hyperplasia
Rat, Male, 2 mg/m³, Animal No. 0800-1307 (H&E)



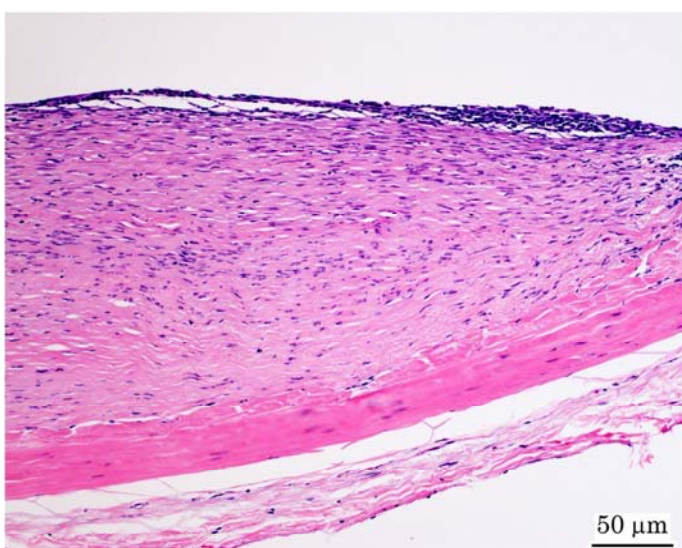
Photograph 17
Lung: Atypical hyperplasia
Rat, Female, 2 mg/m³, Animal No. 0800-2322 (H&E)



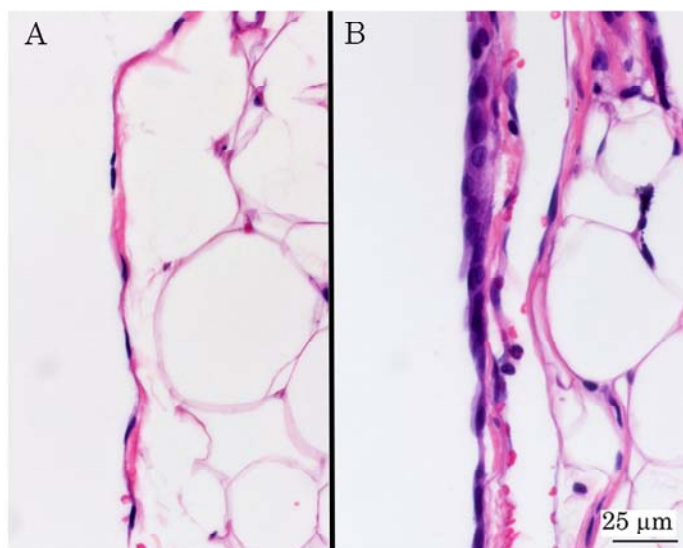
Photograph 18
Lung: Hyperplasia of pneumocyte and infiltration of the alveolar macrophage
Rat, Male, 2 mg/m³, Animal No. 0800-1336 (H&E)



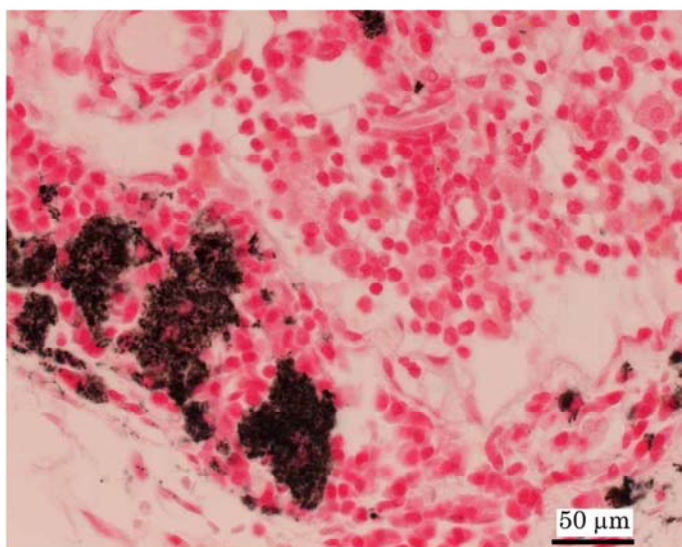
Photograph 19
Lung: Granulomatous change and deposit of MWCNT
Rat, Male, 2 mg/m³, Animal No. 0800-1302 (H&E)



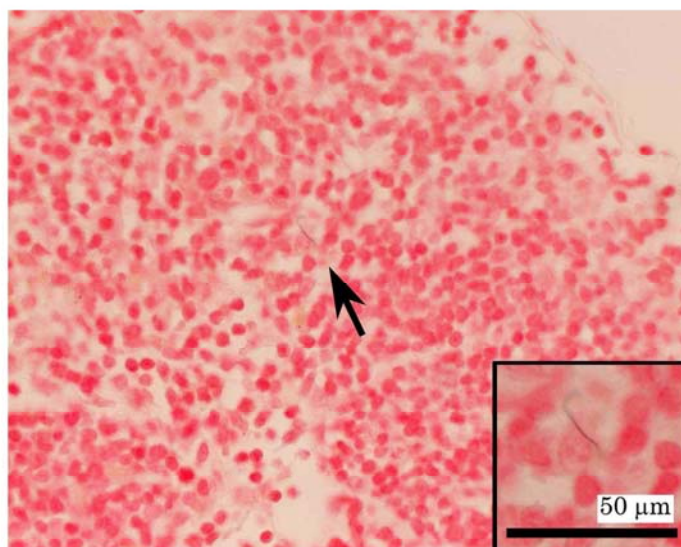
Photograph 20
Pleura (diaphragm): Focal fibrosis
Rat, Male, 2 mg/m³, Animal No. 0800-1301 (H&E)



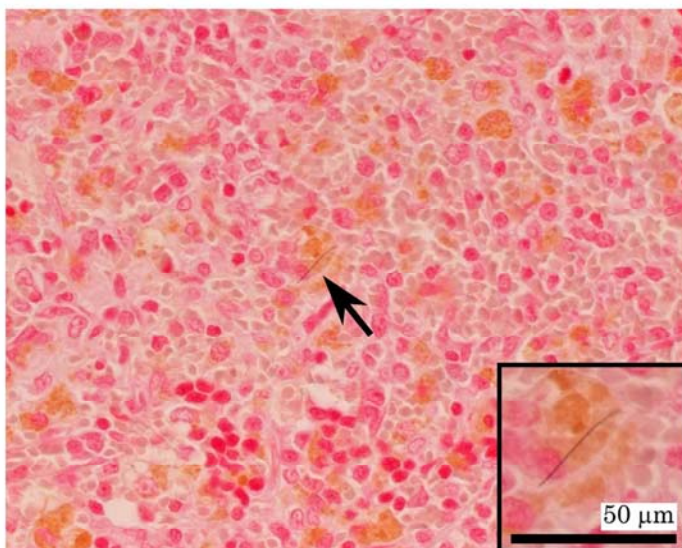
Photograph 21
Mediastinal pleura: Normal mesothelium (A), and mesothelial simple hyperplasia (B)
Rat, Male, 2 mg/m³, Animal No. 0800-1322 (H&E)



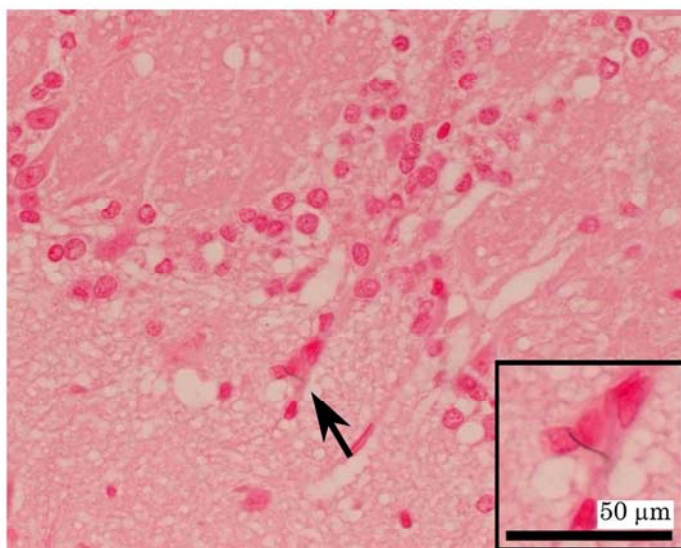
Photograph 22
Mediastinal lymph node: Deposit of MWCNT
Rat, Male, 2 mg/m³, Animal No. 0800-1301 (Kernechtrot)



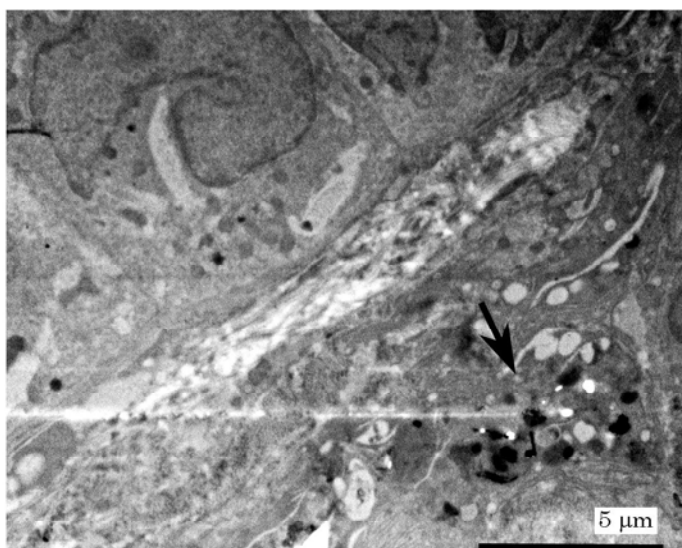
Photograph 23
Axillary lymph node: Deposit of MWCNT
Inset: High magnification of the area indicated by arrow
Rat, Male, 2 mg/m³, Animal No. 0800-1305 (Kernechtrot)



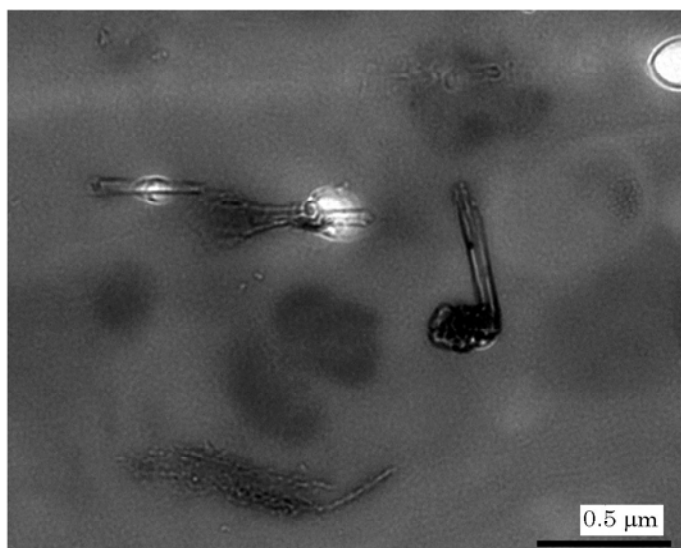
Photograph 24
Spleen: Deposit of MWCNT
Inset: High magnification of the area indicated by arrow
Rat, Male, 2 mg/m³, Animal No. 0800-1301 (Kernechtrot)



Photograph 25
Olfactory bulb: Deposit of MWCNT
Inset: High magnification of the area indicated by arrow
Rat, Male, 2 mg/m³, Animal No. 0800-1304 (Kernechtrot)



Photograph 26
Lung: MWCNT phagocytosed by the alveolar macrophage (arrow) in the interstitium of the bronchiole
Rat, Male, 2 mg/m³, Animal No. 0800-1311 (TEM)



Photograph 27
High magnification of the area indicated by arrow in Photograph 26
Rat, Male, 2 mg/m³, Animal No. 0800-1311 (TEM)