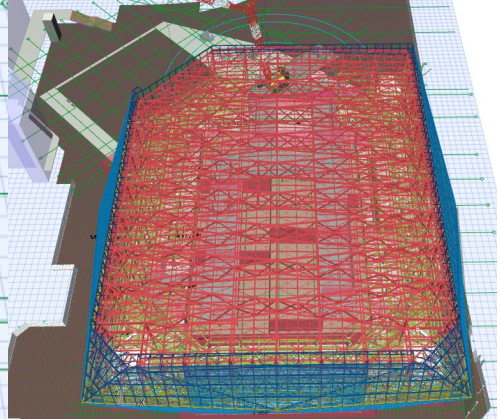
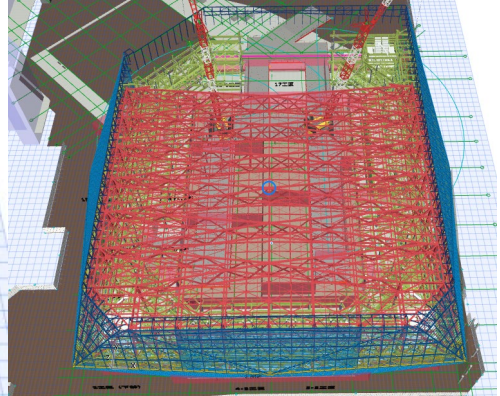
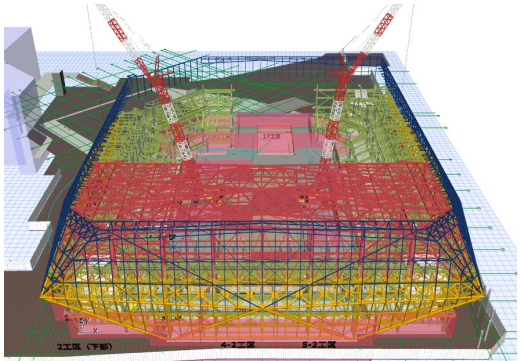
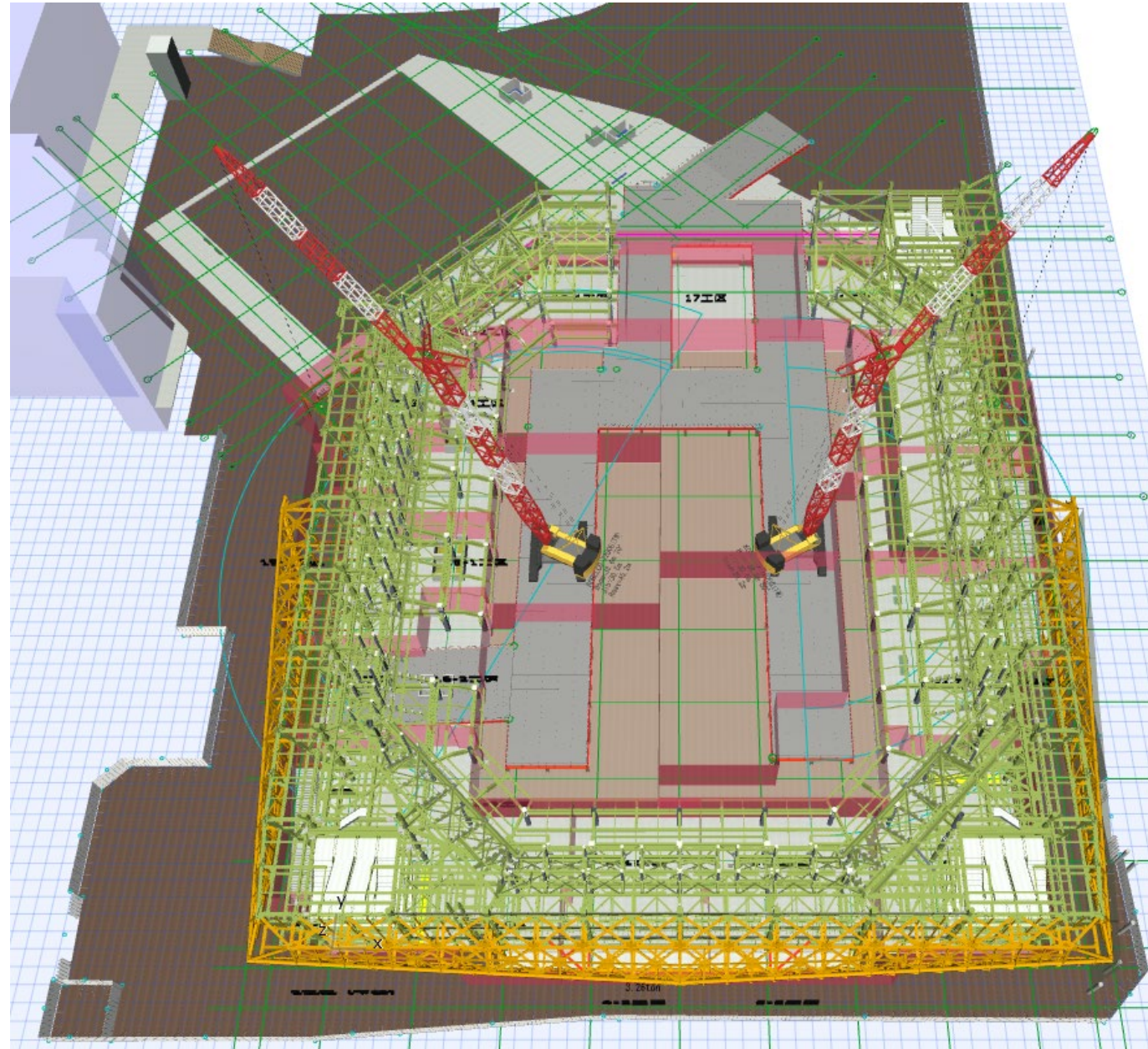
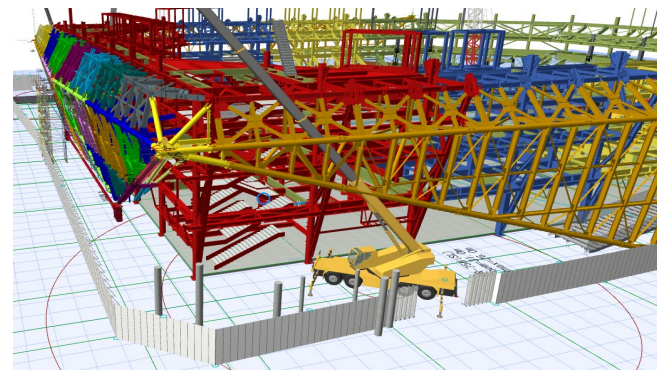


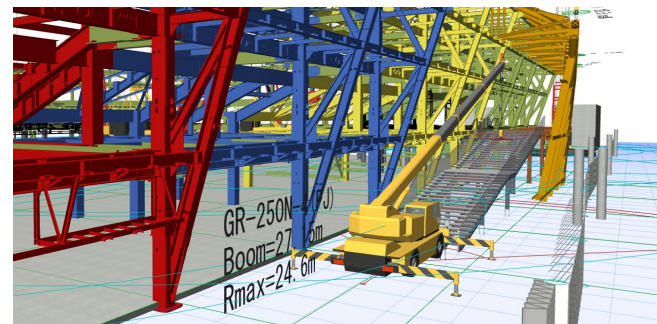
鉄骨 BIM



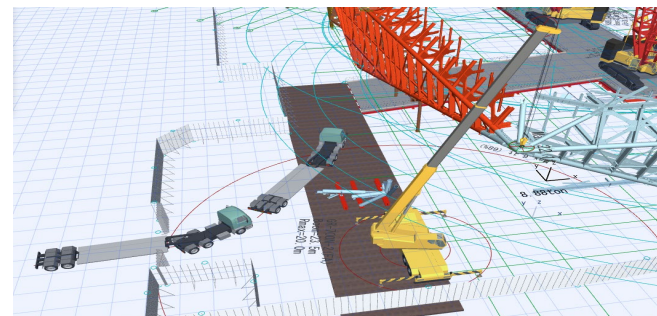
## クレーンの揚重検討



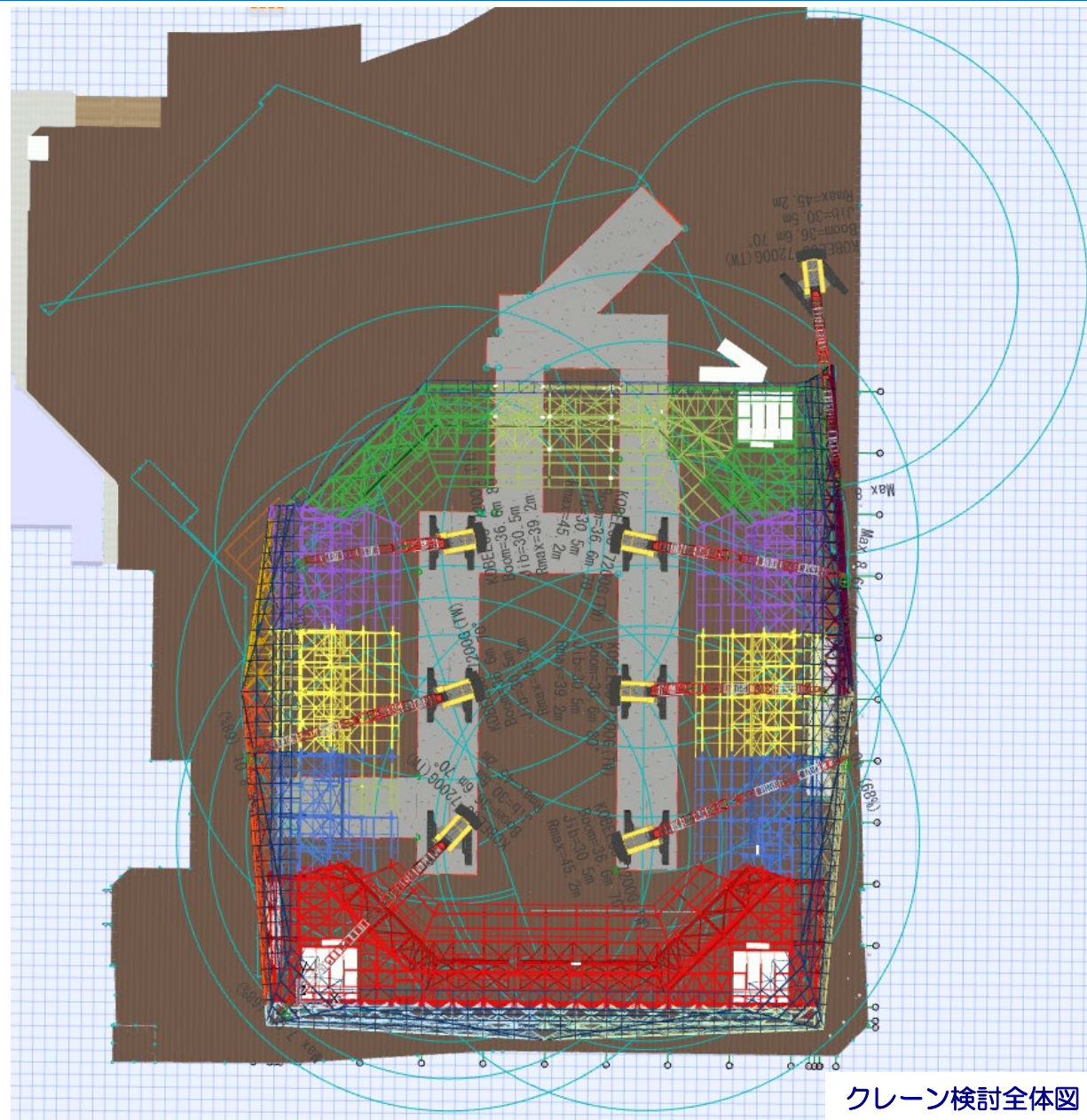
2ゲートからの揚重検討



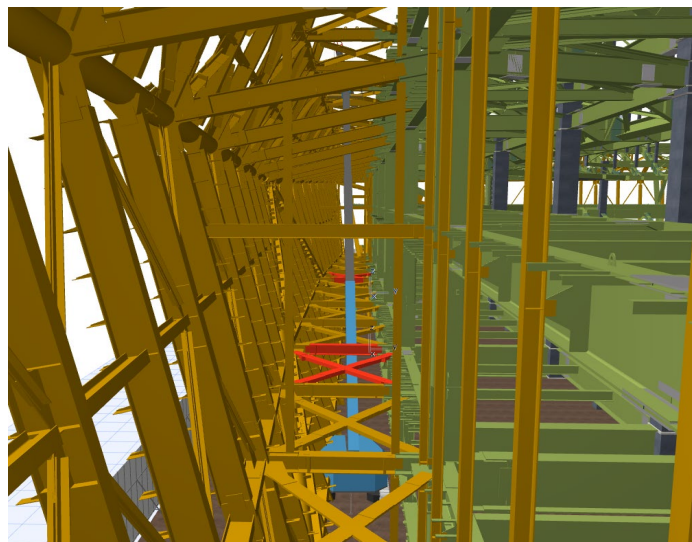
外部階段の揚重検討



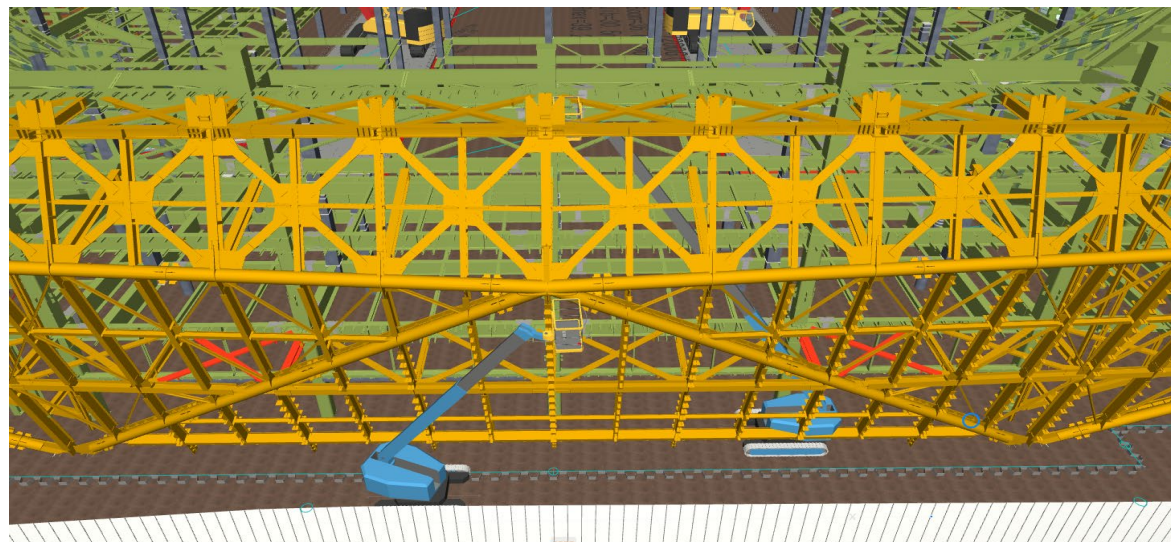
3ゲートからのの揚重検討



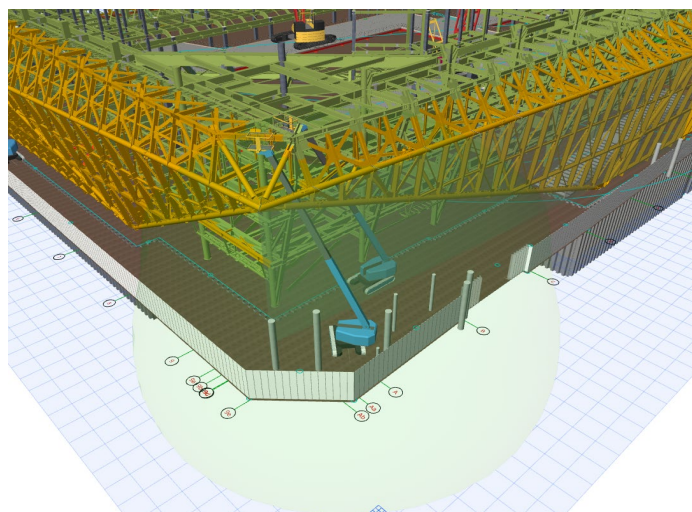
クレーン検討全体図



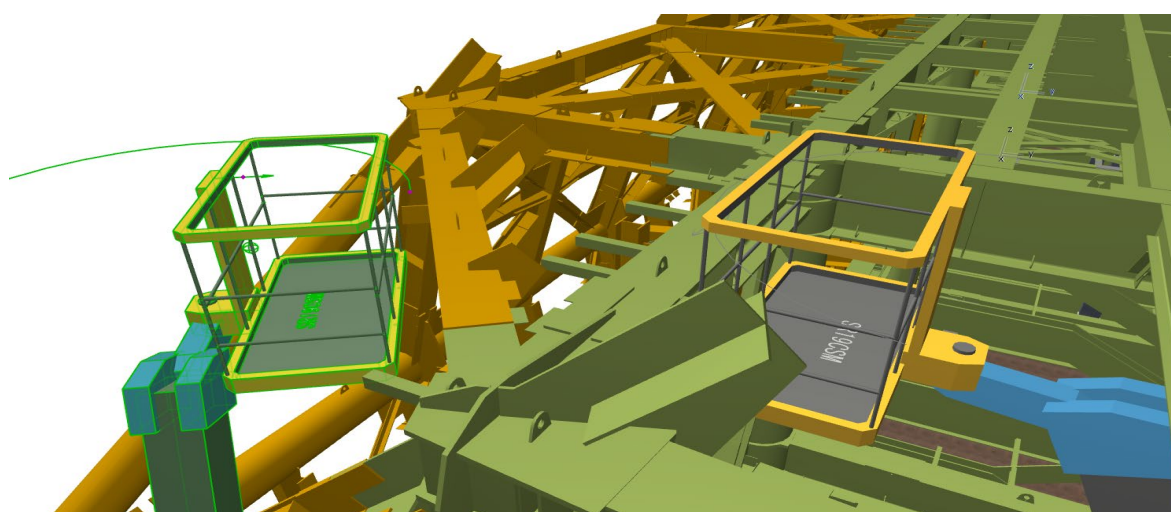
鉄骨干渉部検討



設置個所検討

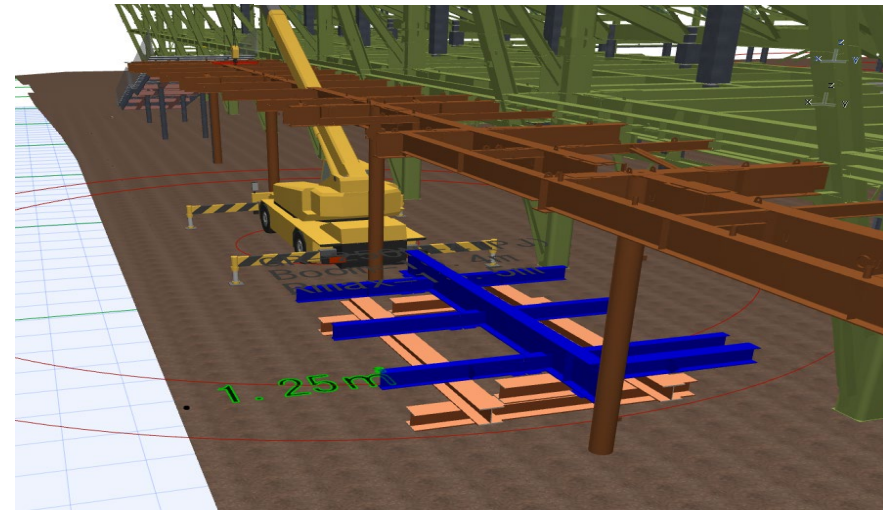


作業車作業半径検討

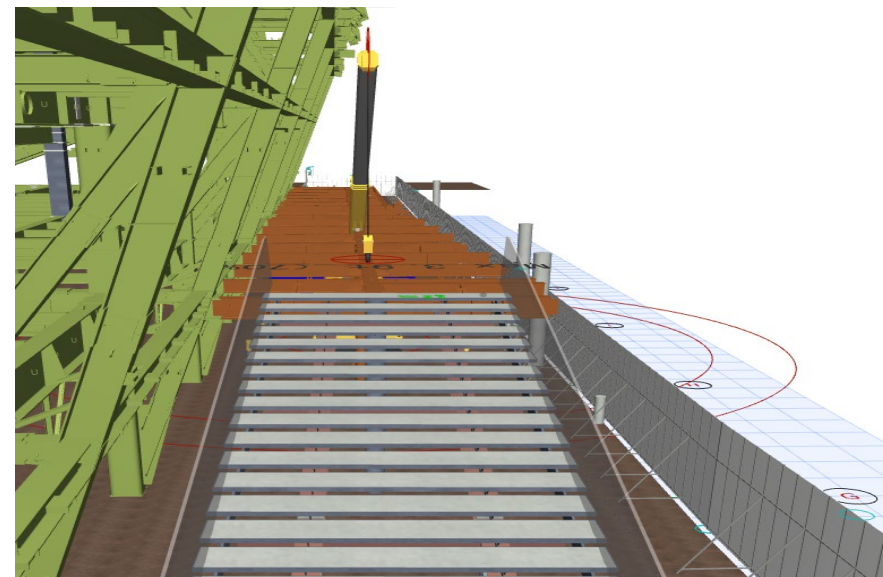


作業性検討

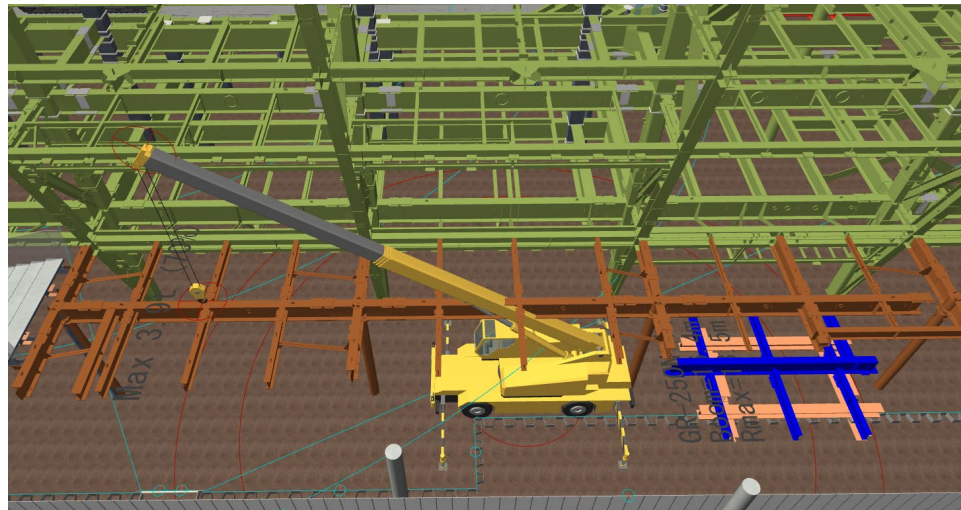
## 地組ヤードの検討



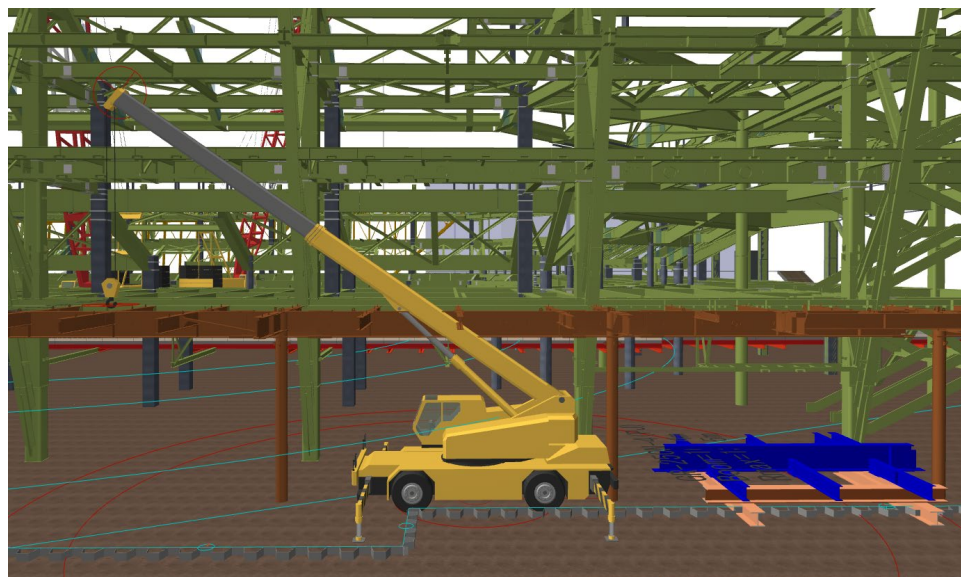
地組重量の検討



高さ方向検討

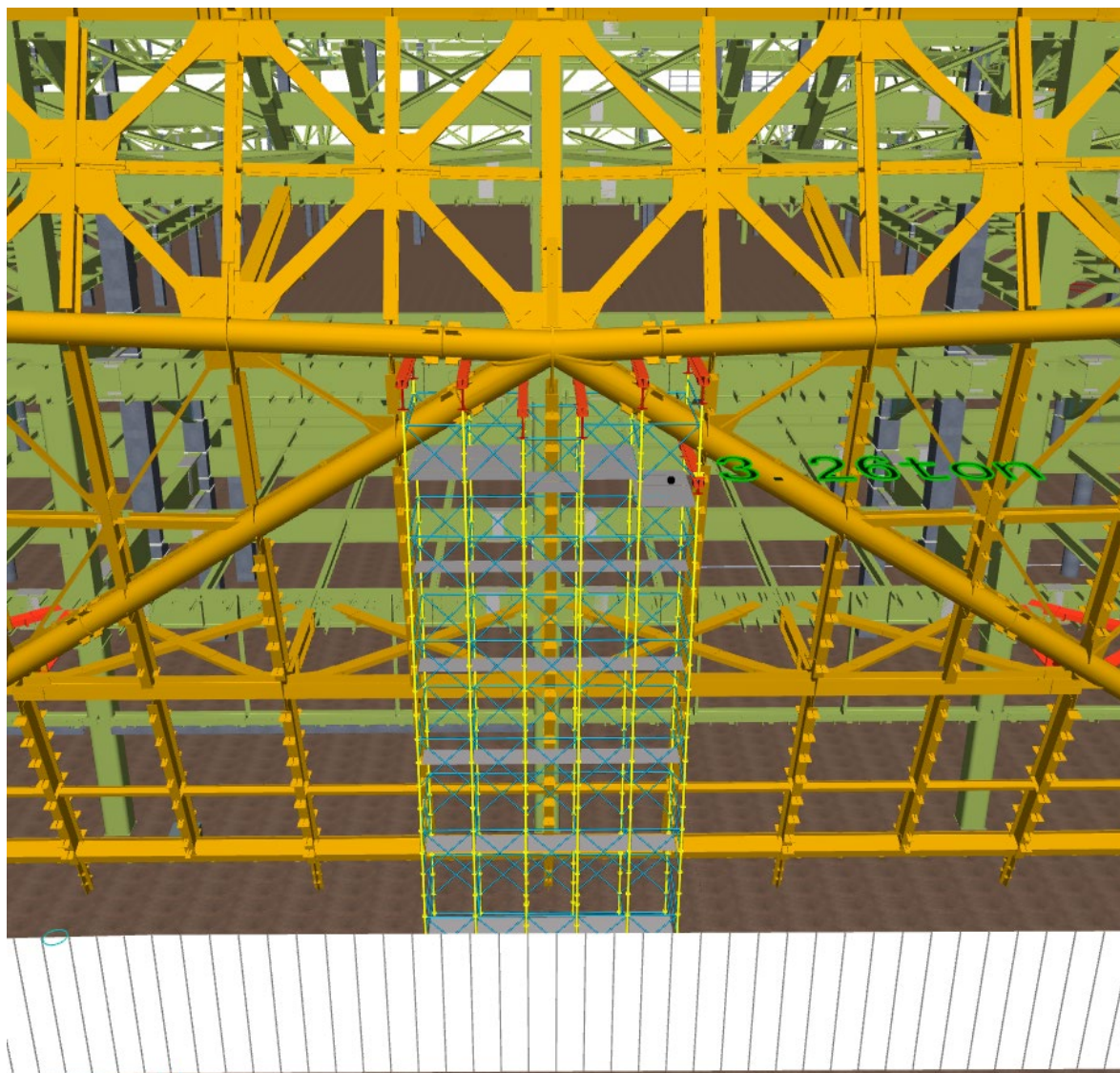


クレーン設置位置検討

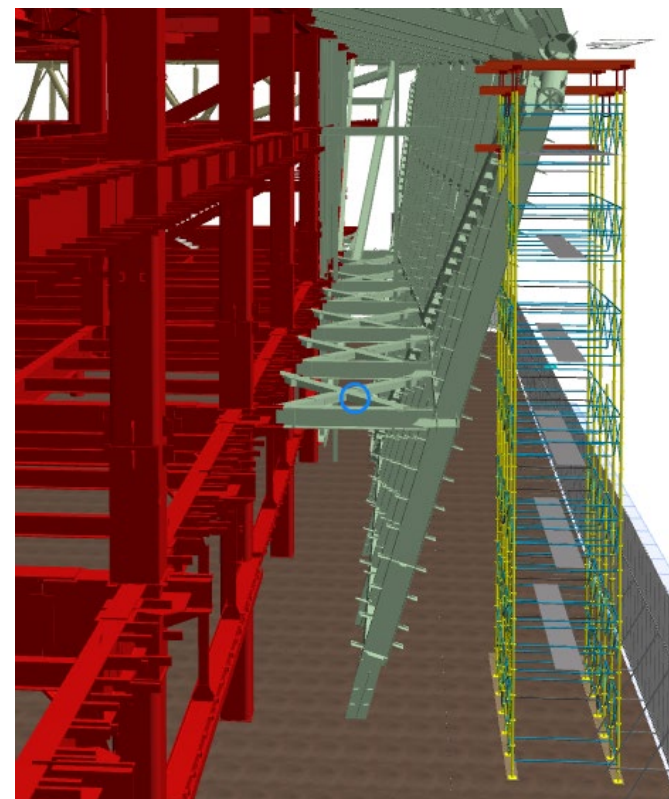


高さ方向検討

# 丸鋼管ジョイント部支保工



支保工全体図

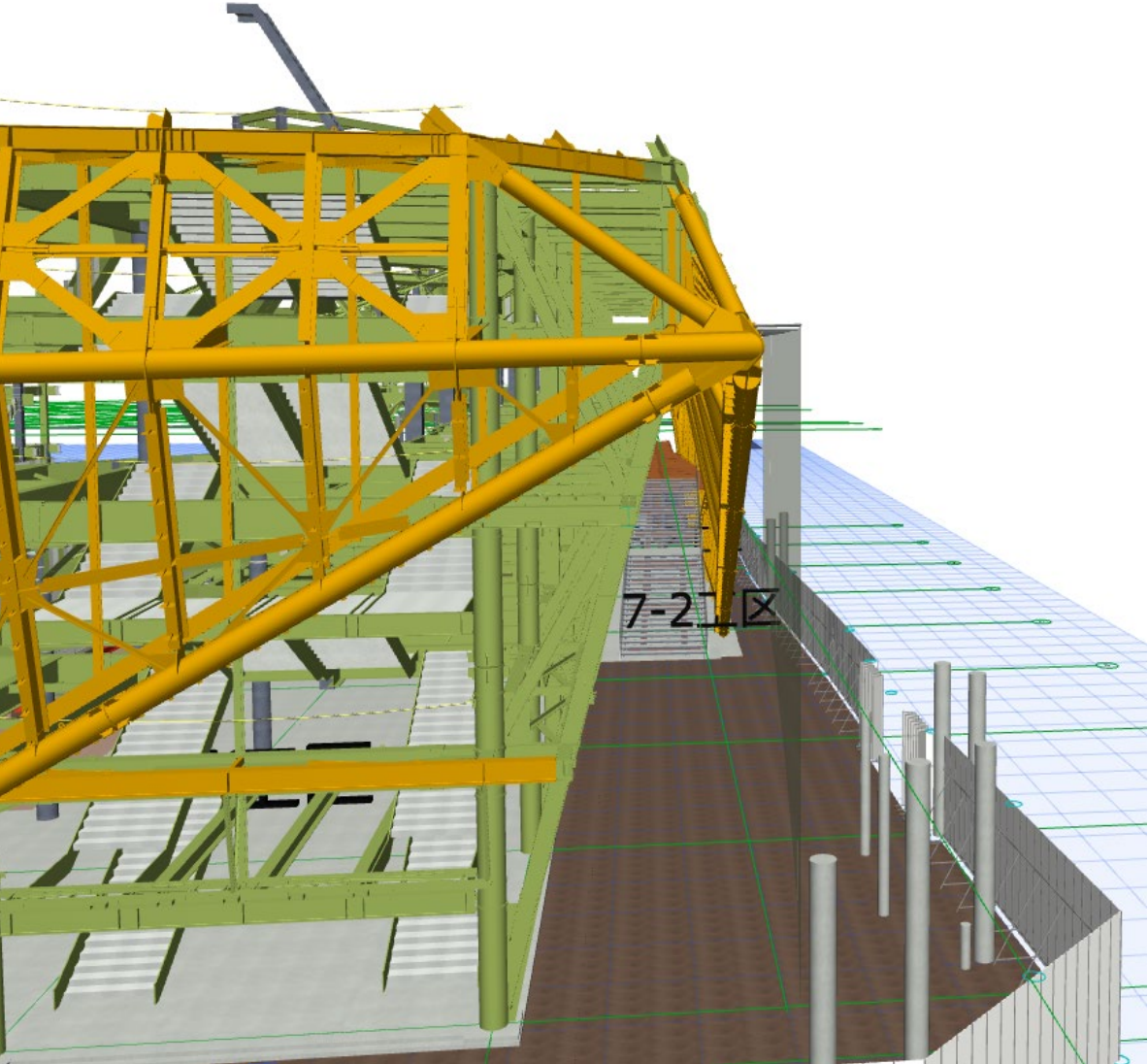


支保工全体図

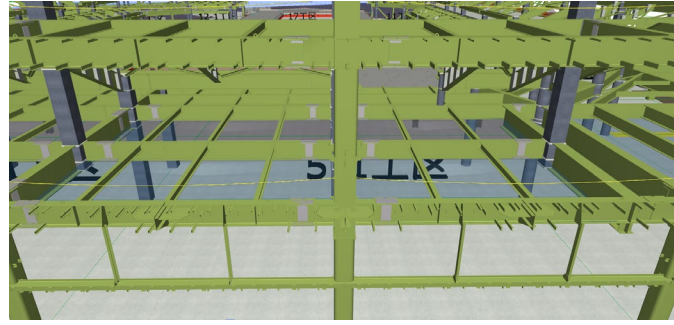


鉄骨材重量確認

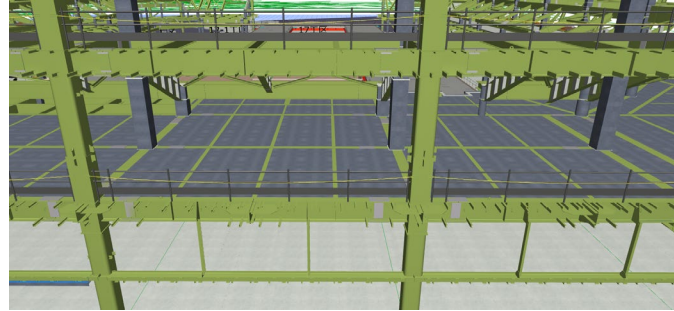
外部養生・墜落防止設備の検討



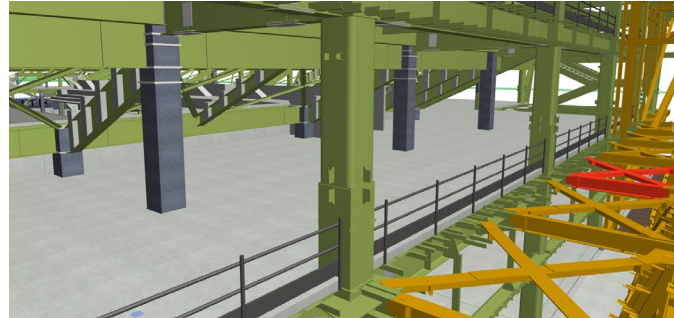
外部養生



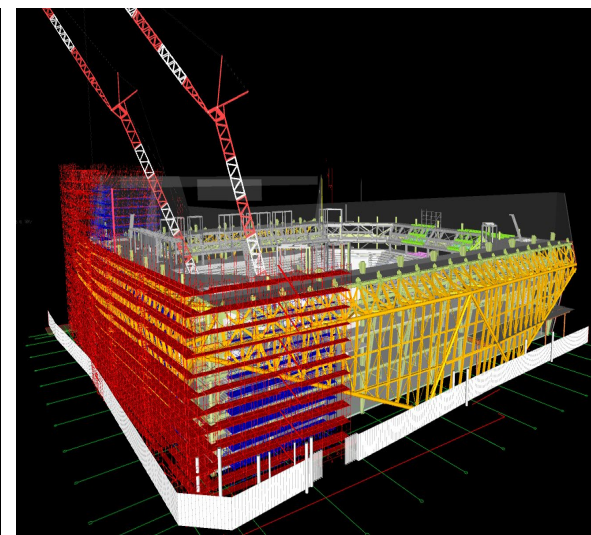
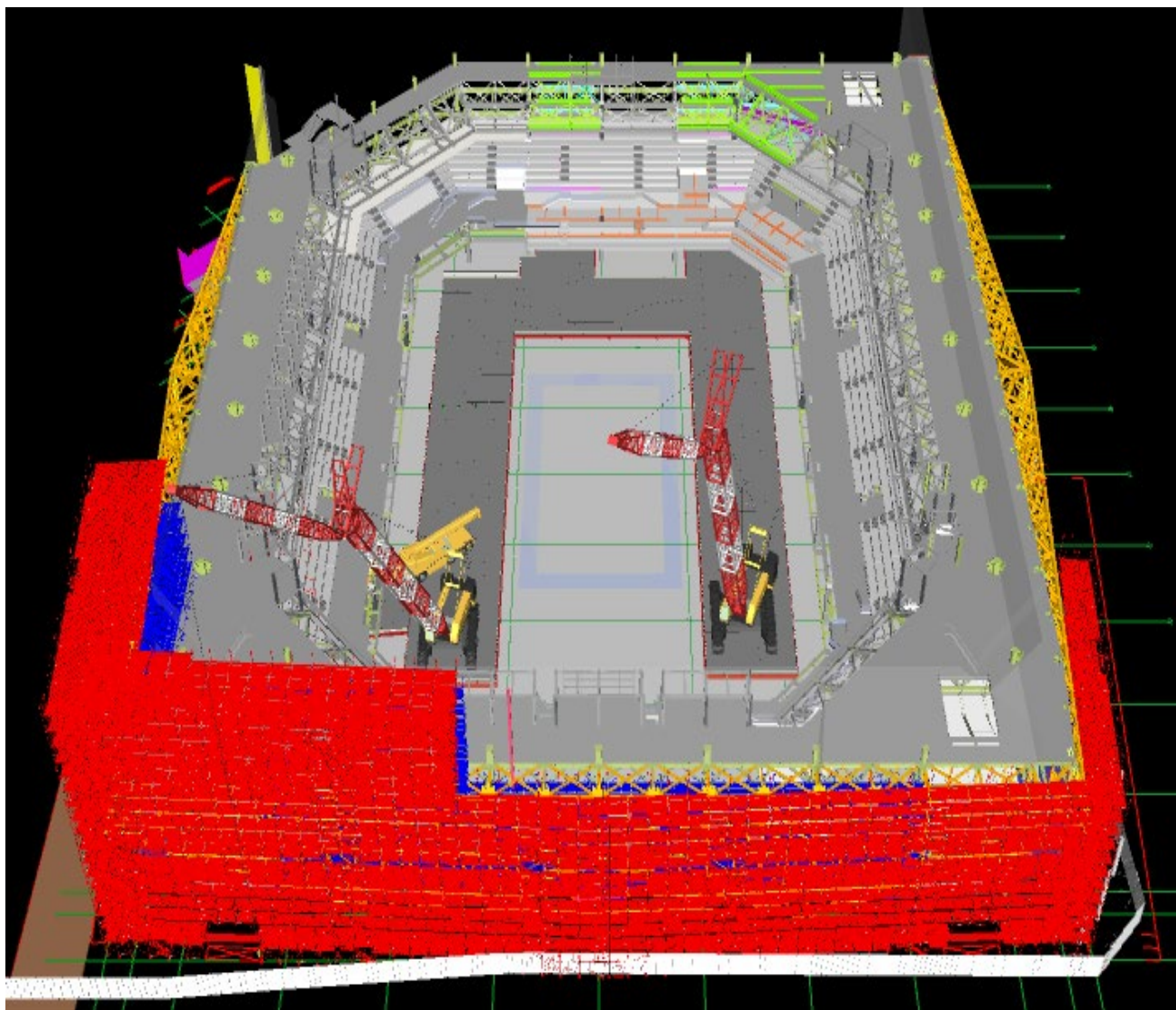
スタンド親網処置



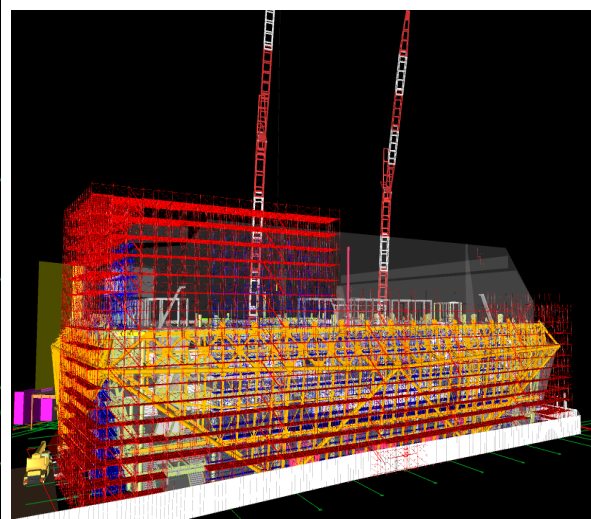
親網→手すりに変更



外皮-スタンド隙間処置

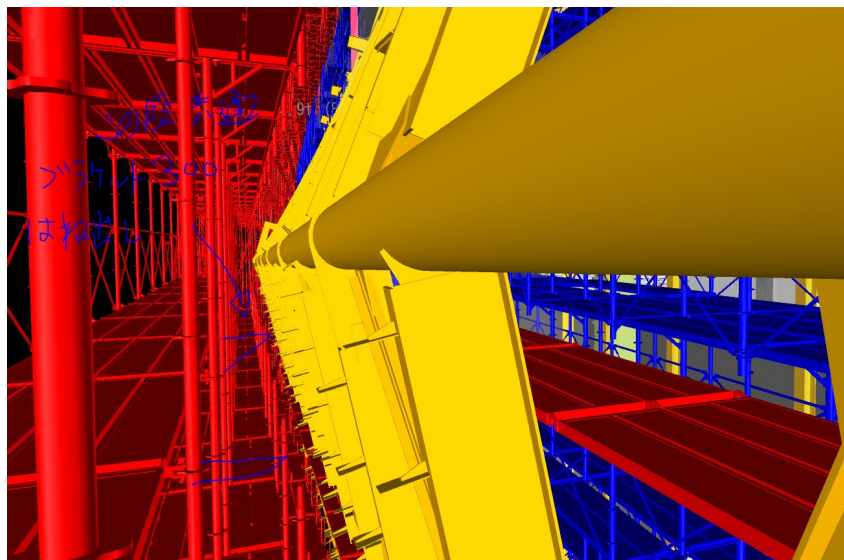


南東面より

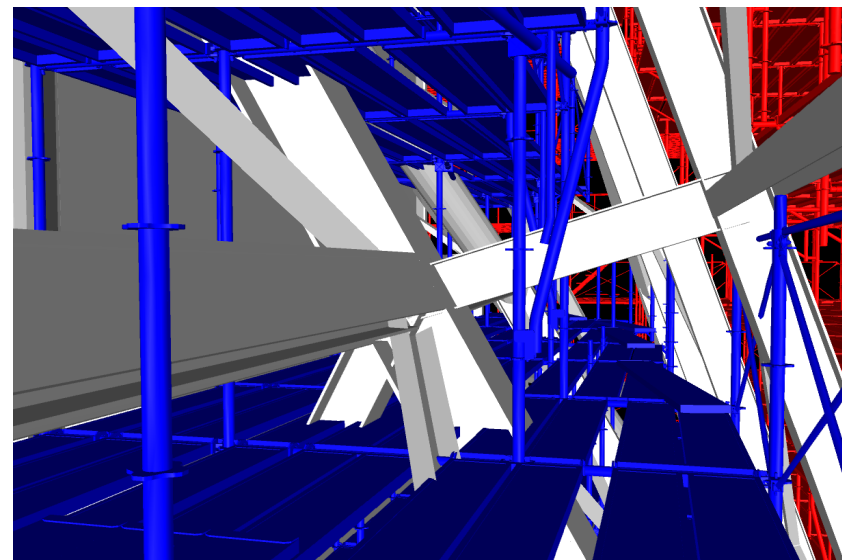


南面より

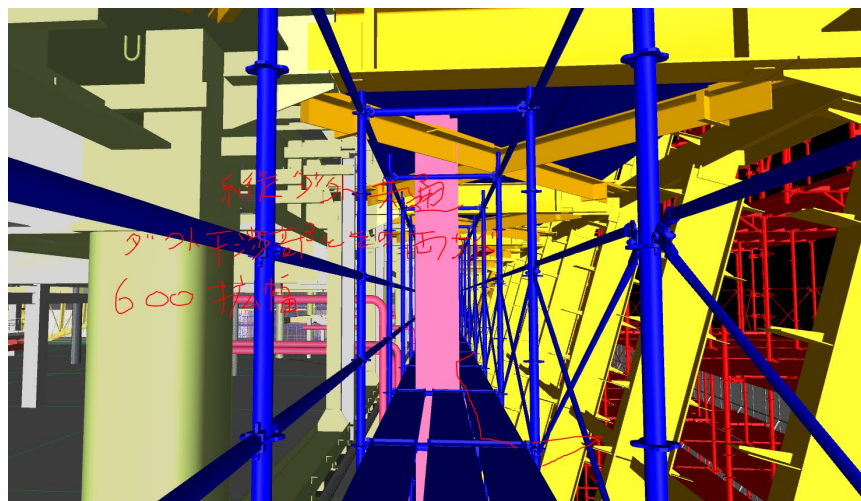
全体図



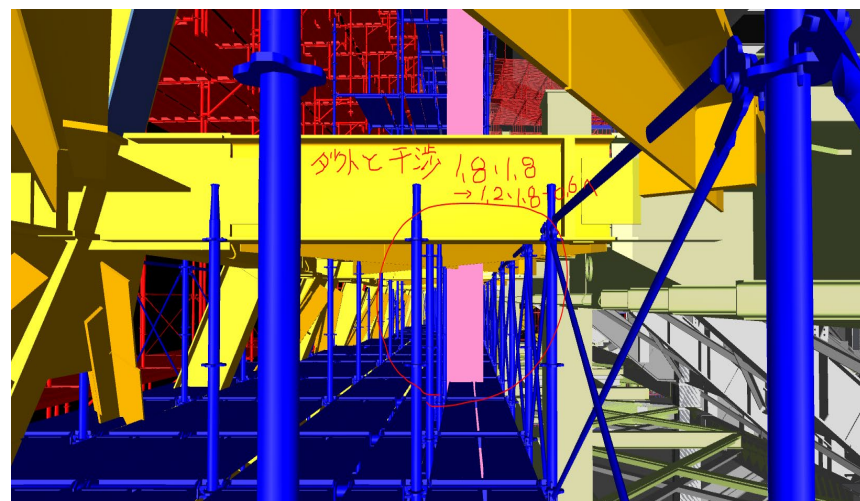
作業性の確認



鉄骨と足場の干渉確認



ダクトが施工後の足場形状の確認



ダクトが施工後の足場形状の確認